

swin field

## SYSTEM DESIGN MODEL

Stage 2 – Full Functionality.

Red Cross Field System

## Executive Summary

This document captures the design philosophy and system at a high level, as well as detailed object level descriptions. Comprehensive class descriptions, interaction diagrams and database design specifications are explained.

Any new project members should be able to read this document to gain a high level understanding of the interactions of the packages within the Field System.

## Contents

1. Introduction.....	5
1.1. Document Purpose .....	5
1.2. Document Scope.....	5
1.3 System Description .....	5
2. Use Case Diagram .....	6
3. Packages.....	7
3.1 Package Diagram – Overview.....	7
3.2 Package Diagram – Models .....	8
3.3 Package Diagram – Controllers .....	8
3.4 Package Diagram – Views .....	9
4. Classes.....	10
4.1 Class Diagram.....	10
5. Sequence Diagrams .....	14
5.1. SD0102 – Add Public Log.....	14
5.2. SD0103 – Edit Public Log .....	15
5.3. SD0104 – Archive Public Log .....	16
5.4. SD0202 – Add EOC Log.....	16
5.4. SD0202 – Add EOC Log.....	17
5.5. SD0203 – Edit EOC Log.....	18
5.6. SD0204 – Archive EOC Log .....	19
5.7. SD0306 – Add Client.....	20
5.8. SD0307 – Edit Client.....	20
5.8. SD0307 – Edit Client.....	21
5.9. SD0308 – Archive Client.....	22
5.10. SD0405 – Add Team.....	22
5.10. SD0405 – Add Team.....	23
5.11. SD0406 – Edit Team.....	23
5.11. SD0406 – Edit Team.....	24
5.12. SD0407 – Archive Team .....	24
5.12. SD0407 – Archive Team .....	25
5.13. SD0506 – Add Event.....	25

---

5.13. SD0506 – Add Event.....	26
5.14. SD0507 – Edit Event.....	27
5.15. SD0508 – Archive Event.....	28
5.16. SD0606 – Add Site.....	29
5.17. SD0607 – Edit Site.....	29
5.17. SD0607 – Edit Site.....	30
5.18. SD0608 – Archive Site.....	31
5.19. SD0802 – Edit Personal Details.....	32
5.20. SD0803 – Edit Others Personal Details.....	33
5.21. SD1102 – Select Available Shift.....	34
5.22. SD1103 – Add Available Shift.....	34
5.22. SD1103 – Add Available Shift.....	35
5.23. SD1104 – Edit Available Shift.....	35
5.23. SD1104 – Edit Available Shift.....	36
5.24. SD1105 – Assign Volunteer to Available Shift.....	37
5.25. SD1301 – View Availability.....	38
5.26. SD1302 – Edit Availability.....	39
5.27. SD1303 – View Volunteers Availability.....	40
6. Database Design.....	41
6.1 Entity Relationship Diagram.....	41
6.2 Database Dictionary.....	42
7. References.....	43
8. Appendix.....	44
8.1 Full Database Dictionary.....	44

# 1. Introduction

## 1.1. Document Purpose

The purpose of this document is to capture the design philosophy and system at a high level, as well as detailed object level descriptions. The intended audience is team members of the Swin Field project team, the team mentor, and future project teams who will be expanding on the Red Cross Field System.

This document continues on from the System Design Model - Stage 1 document, and contains all 'Add', 'Edit', and 'Archive' functionality.

## 1.2. Document Scope

This document covers various high level design components, namely: how the system is separated into different packages and what is contained in each package, the final Class Diagram including the properties and methods of the classes, Interaction Diagrams describing process flows between the user (view), the controllers (controller), and the database (model) in accordance to the MVC – Model, View, Controller – framework being used by the team, and database design including an Entity Relationship Diagram and Database Dictionary.

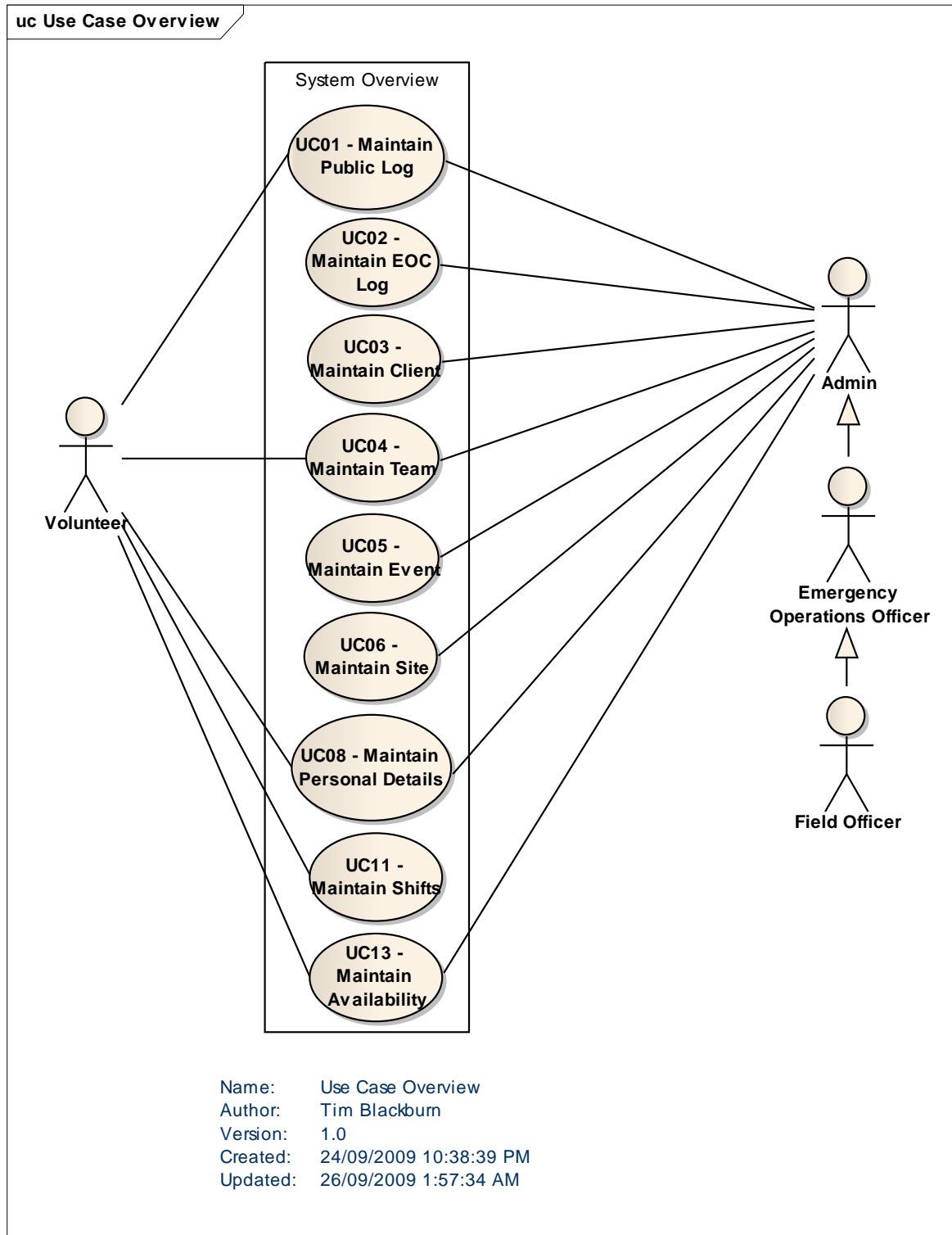
## 1.3 System Description

The system being designed (the Field System) is a web based application which interacts with the 'back of house' application and database being designed by the SwinCross project team. The Field System has two main user groups – Volunteers and Red Cross staff – and as such has two main groups of user views (ie, the views which the Volunteers interact with are separate and independent to the views which staff utilize).

Volunteers can view available shifts and assign themselves to shifts, update their own availability and personal details, view information about teams they are associated to and details related to these specific teams (ie, related Event, Site and Client details), and view and post to the Public Log.

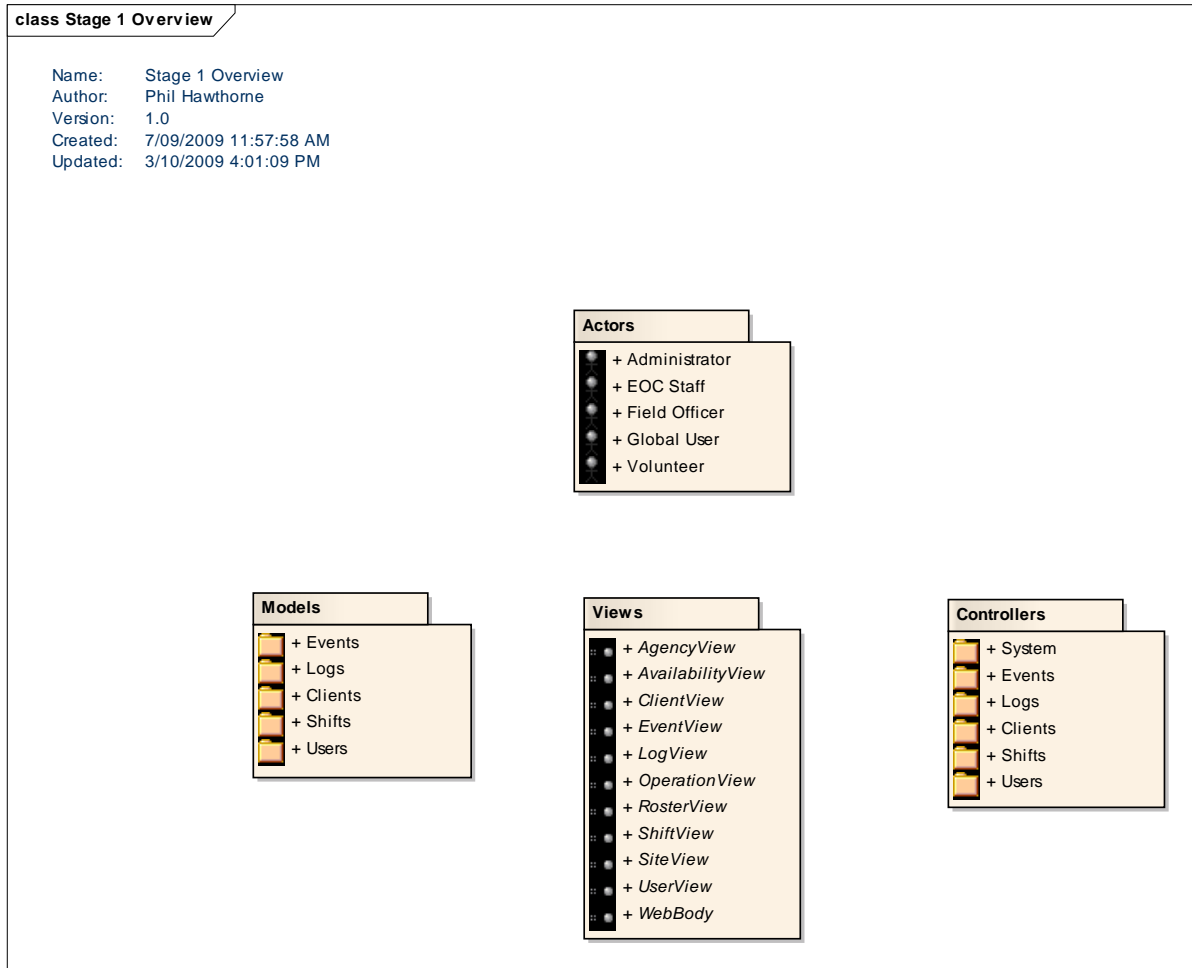
Red Cross Staff (depending on their access level) have full CRUD (delete functionality has been replaced with an 'Archive' functionality due to the Red Cross needing to retain all information for possible future auditing processes) functionality across all data groups within the system. They can Add/Edit/View/Archive Teams/Events/Clients/Sites as well as posting new shifts, assigning volunteers to shifts, and updating personal details. Staff have access to the Public Log and the EOC Log.

## 2. Use Case Diagram

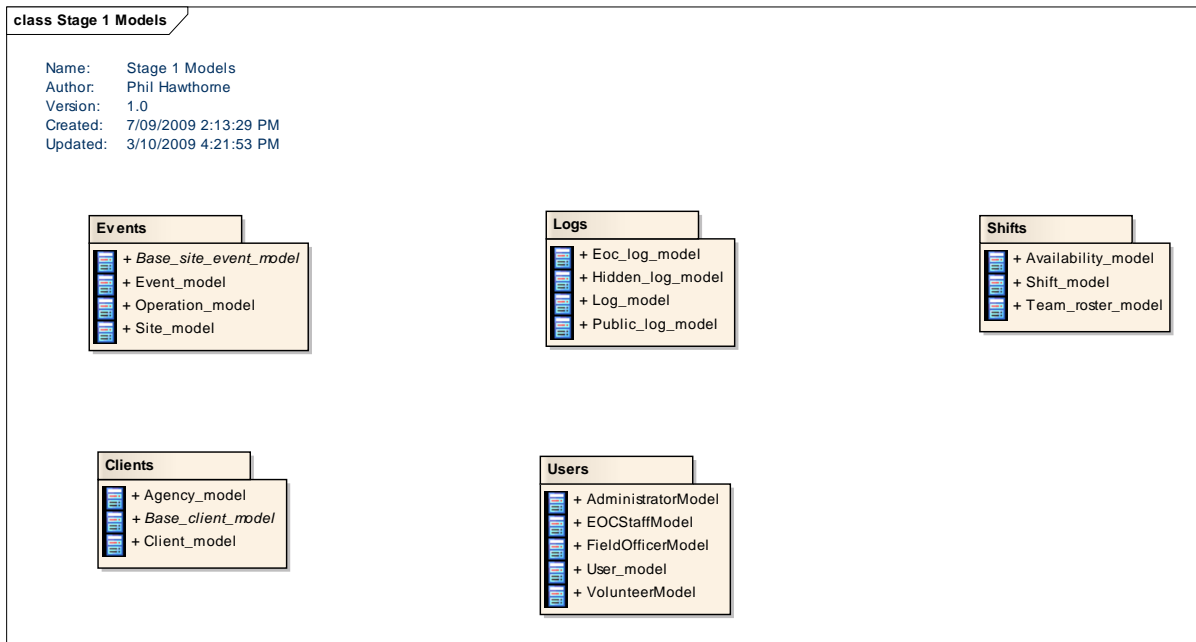


### 3. Packages

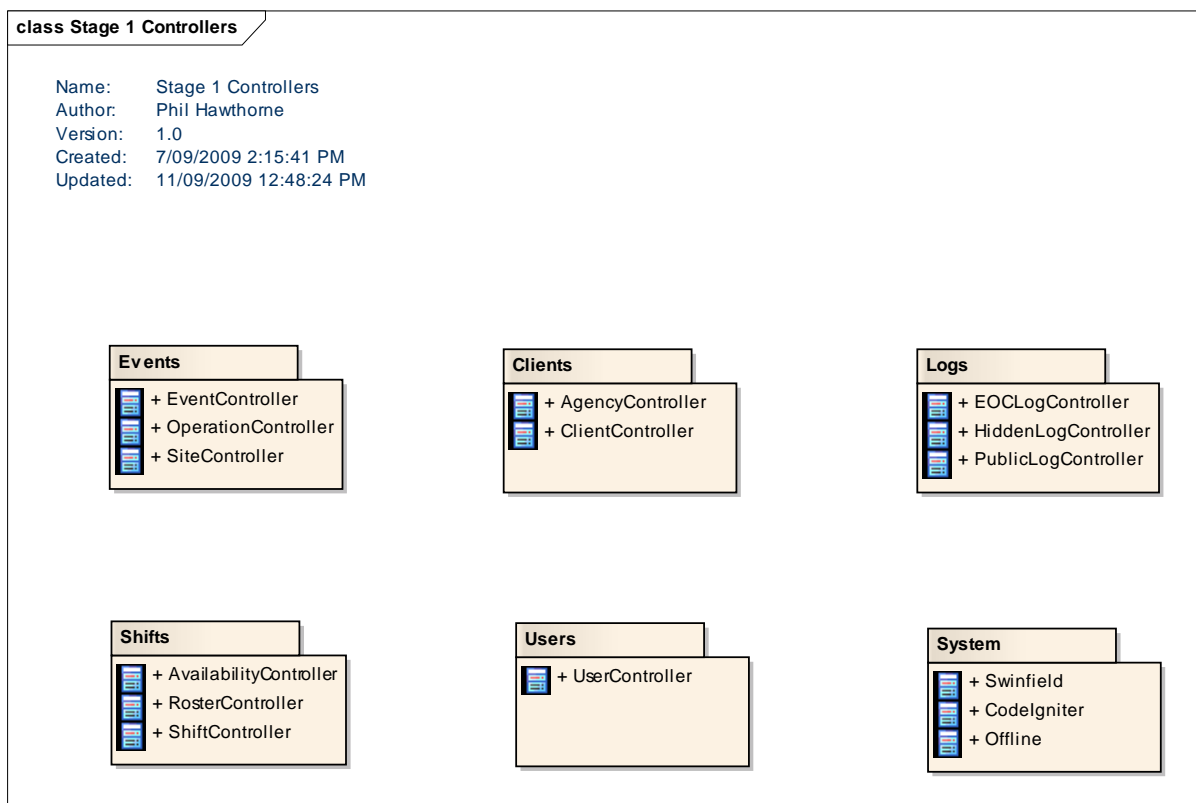
#### 3.1 Package Diagram – Overview



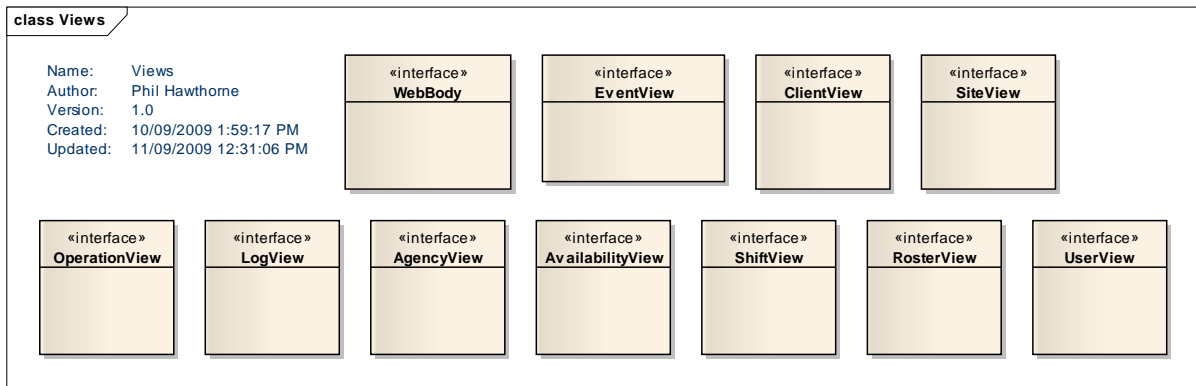
### 3.2 Package Diagram – Models



### 3.3 Package Diagram – Controllers



### 3.4 Package Diagram – Views



# 4. Classes

## 4.1 Class Diagram



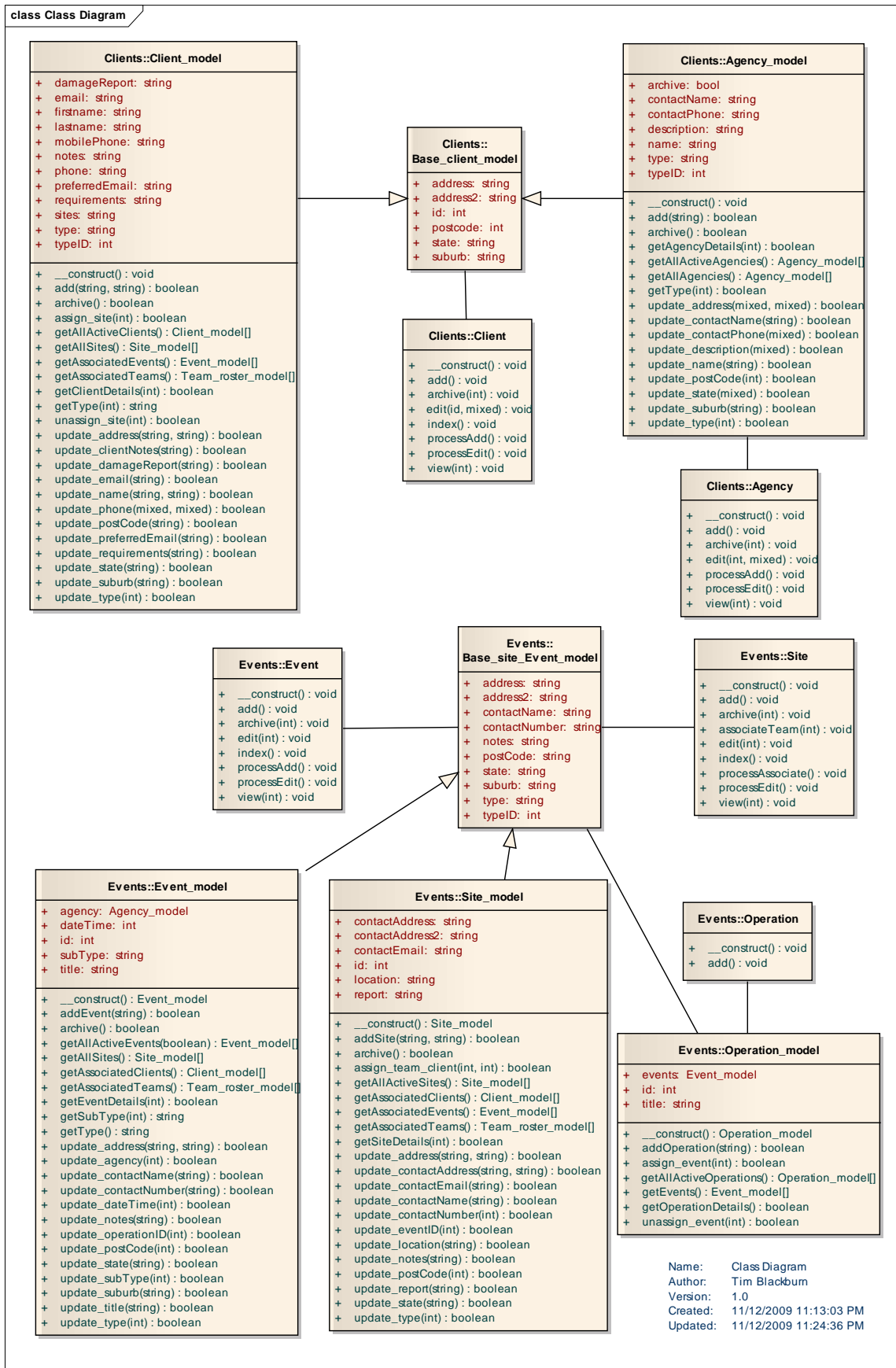
class Class Diagram

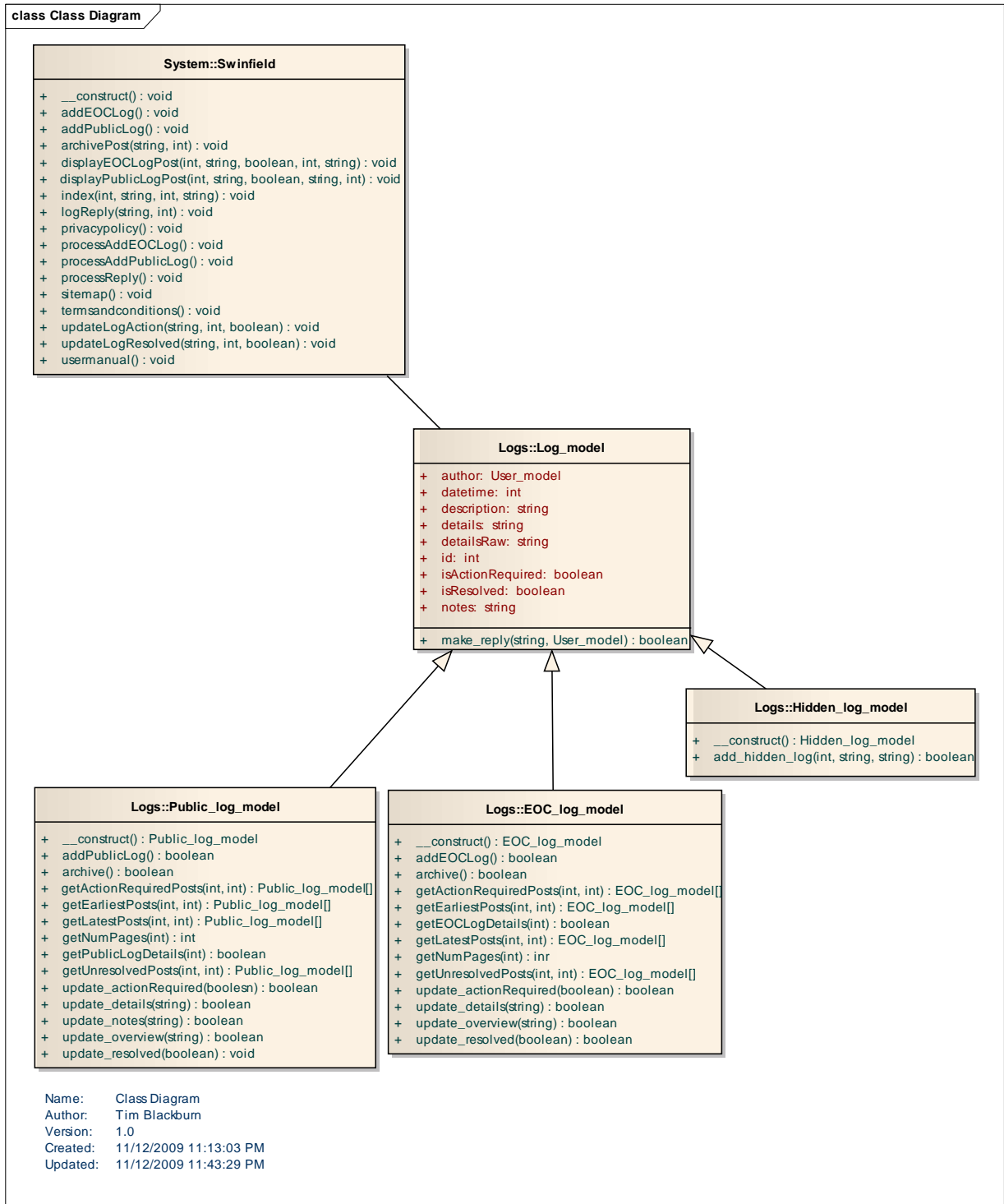


**Users::User**

- + processEdit(): void
- + \_\_construct(): void
- + archive(): void
- + details(): void
- + doResendPassword(): void
- + edit(int, string): void
- + forgottenPassword(): void
- + initialPassword(): void
- + login(): void
- + logout(): void
- + siteSearch(): void
- + updateInitialPassword(): void
- + userSearch(): void
- + view(int, string): void
- + volunteerStaffSearch(): void

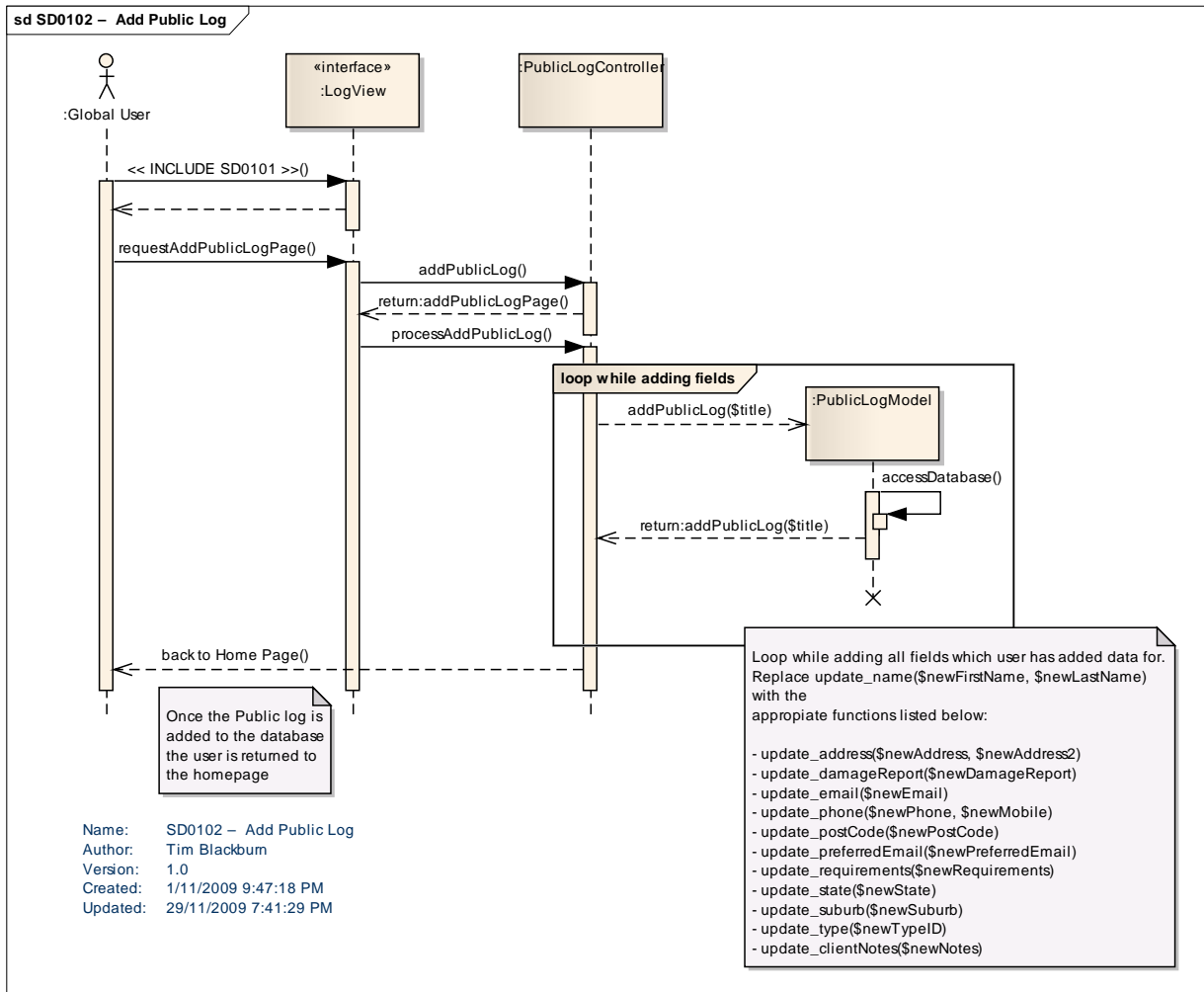
Name: Class Diagram  
 Author: Tim Blackburn  
 Version: 1.0  
 Created: 11/12/2009 11:13:03 PM  
 Updated: 11/12/2009 11:24:36 PM



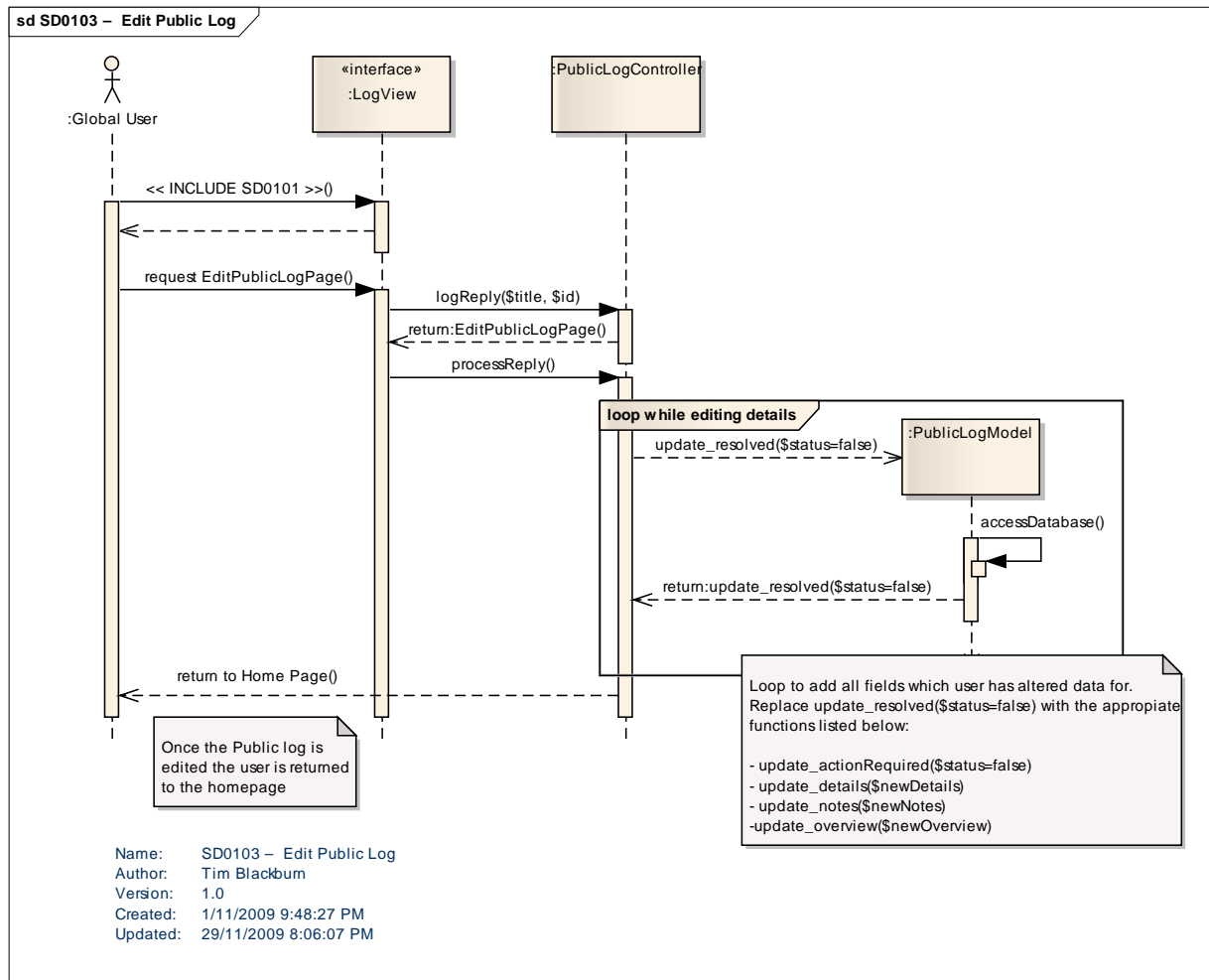


## 5. Sequence Diagrams

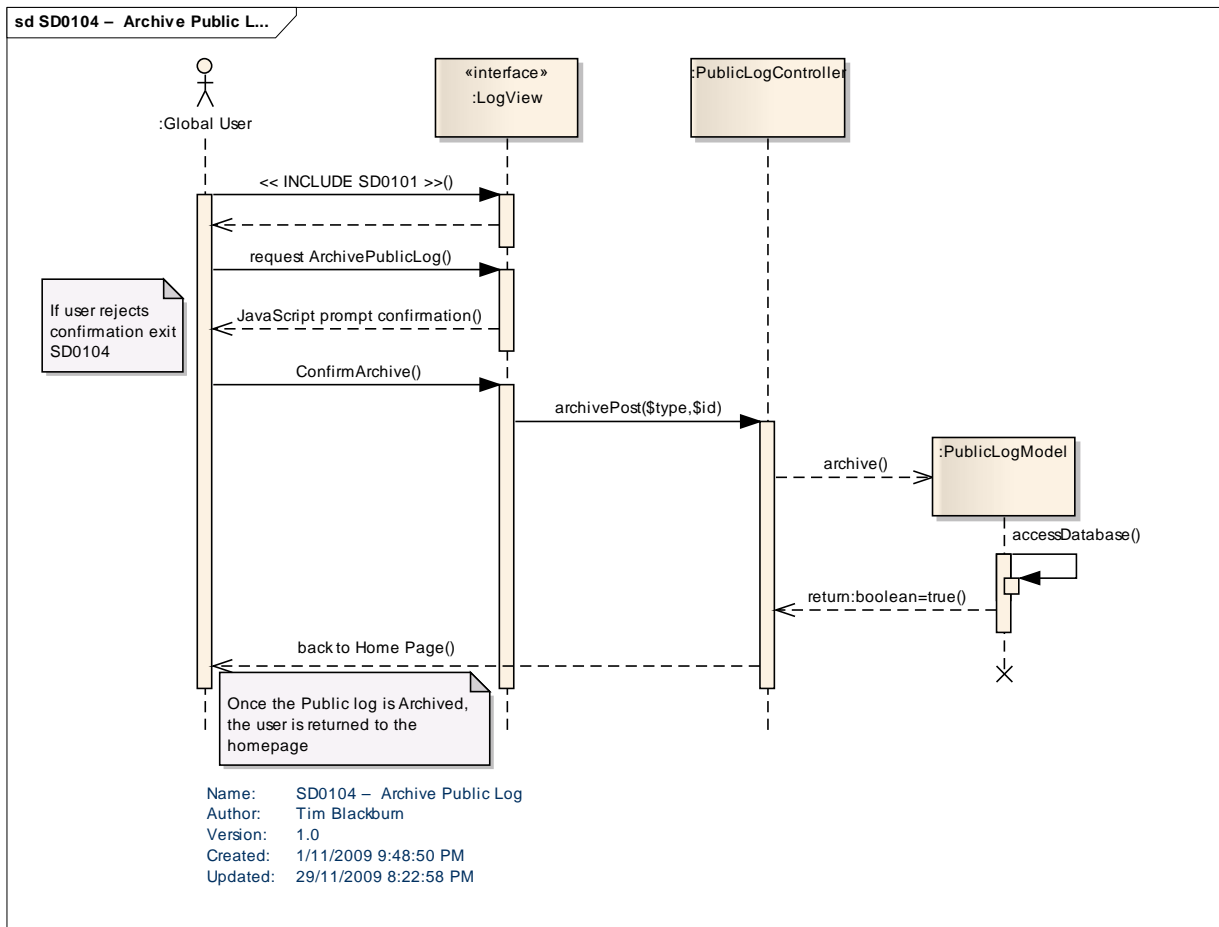
### 5.1. SD0102 – Add Public Log



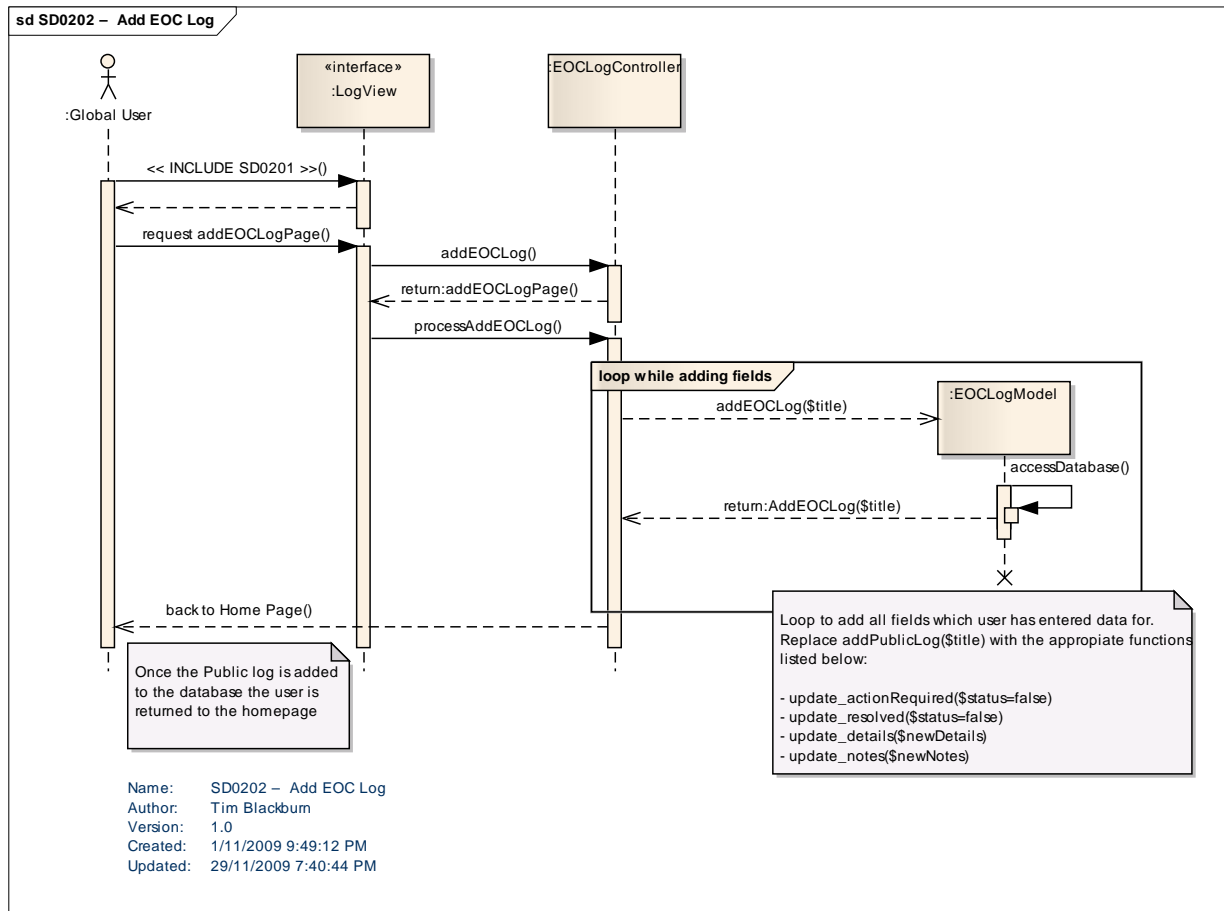
### 5.2. SD0103 – Edit Public Log



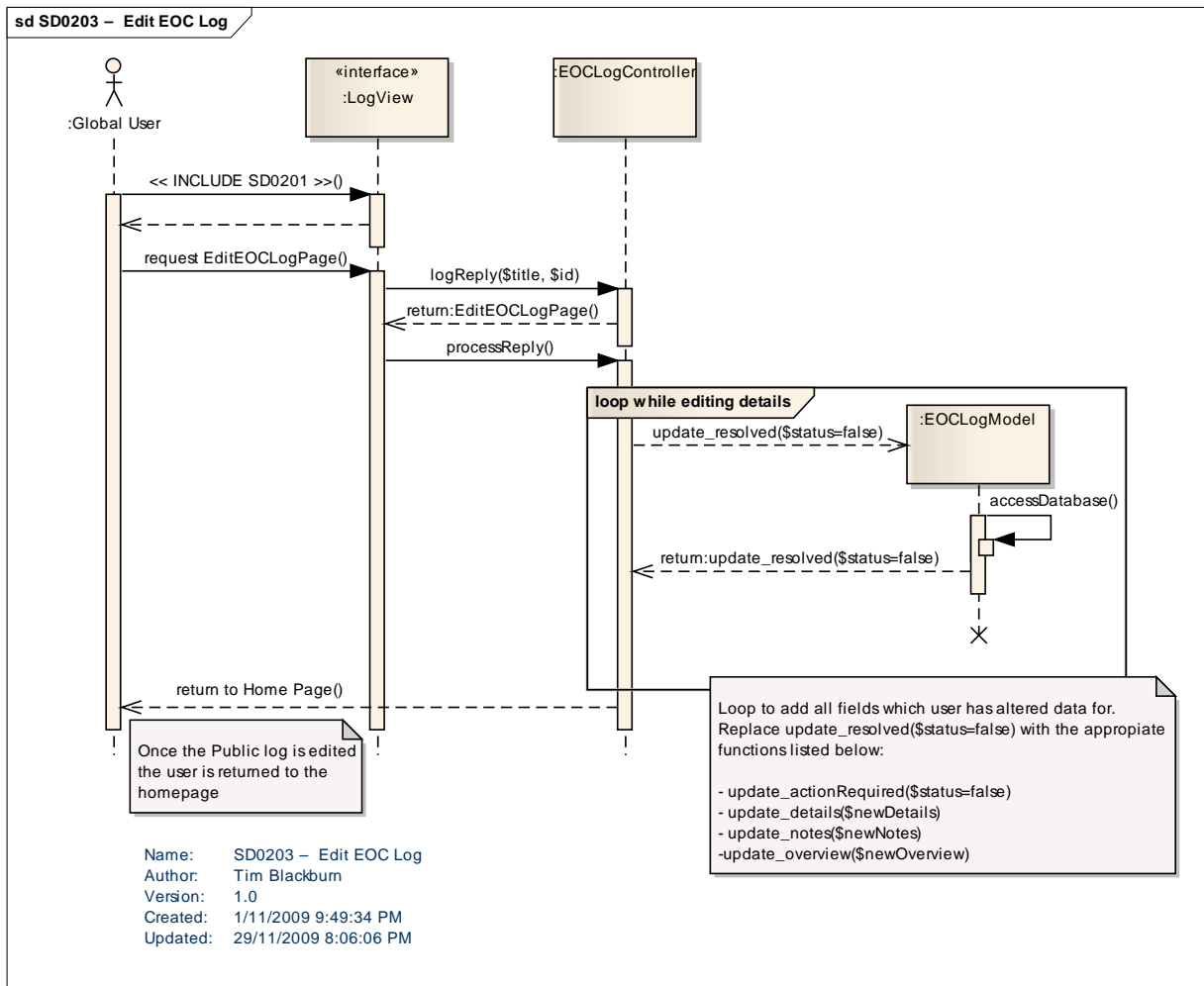
5.3. SD0104 – Archive Public Log



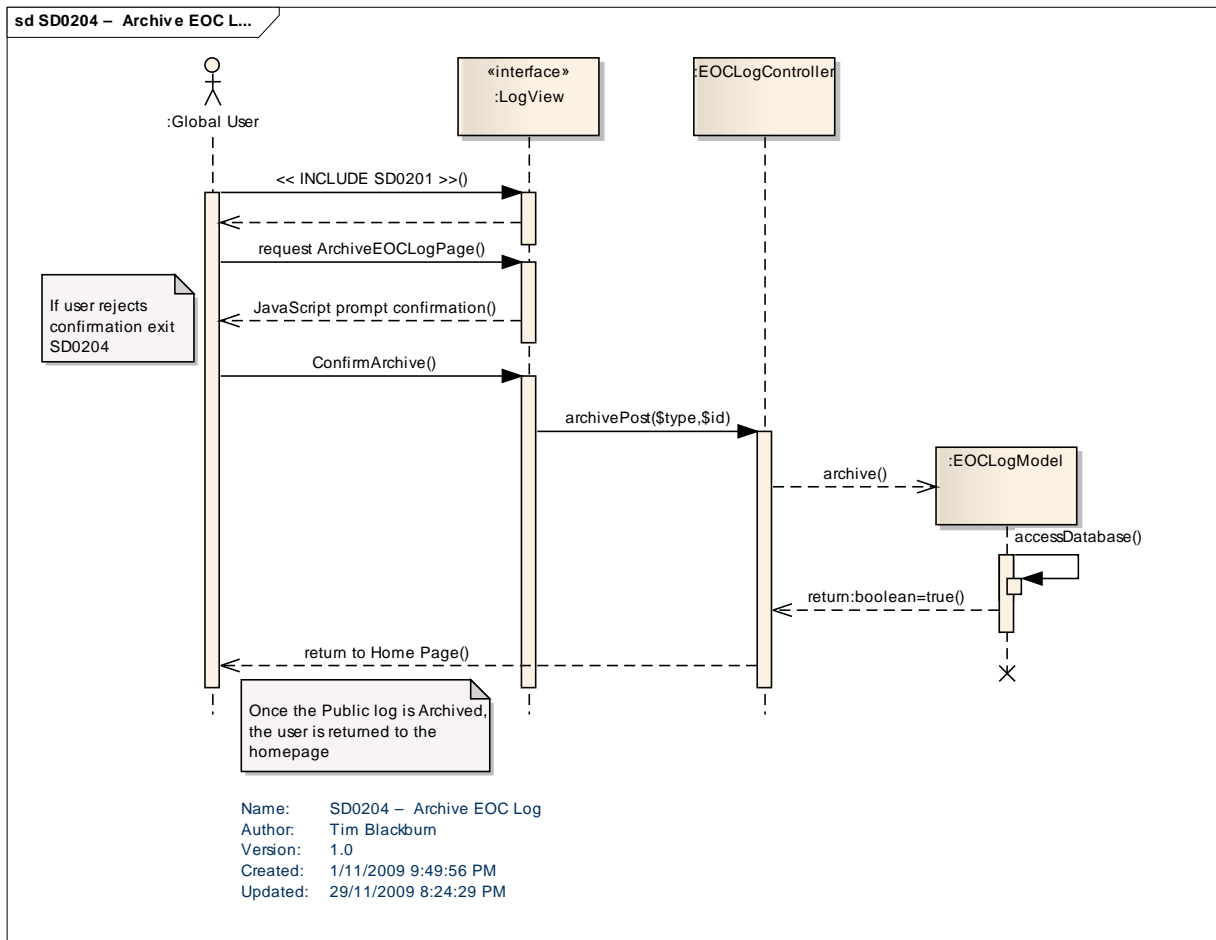
### 5.4. SD0202 – Add EOC Log



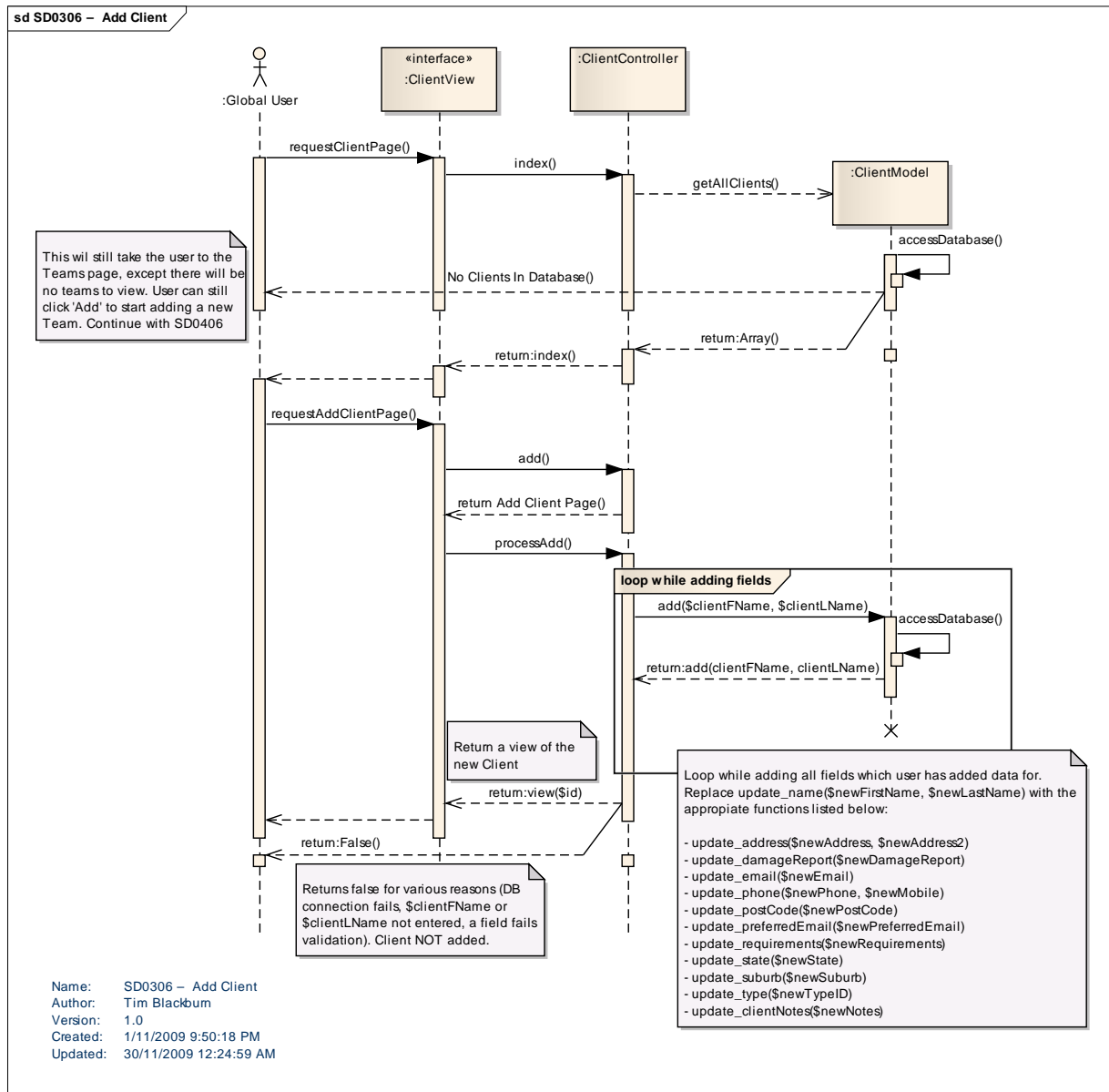
### 5.5. SD0203 – Edit EOC Log



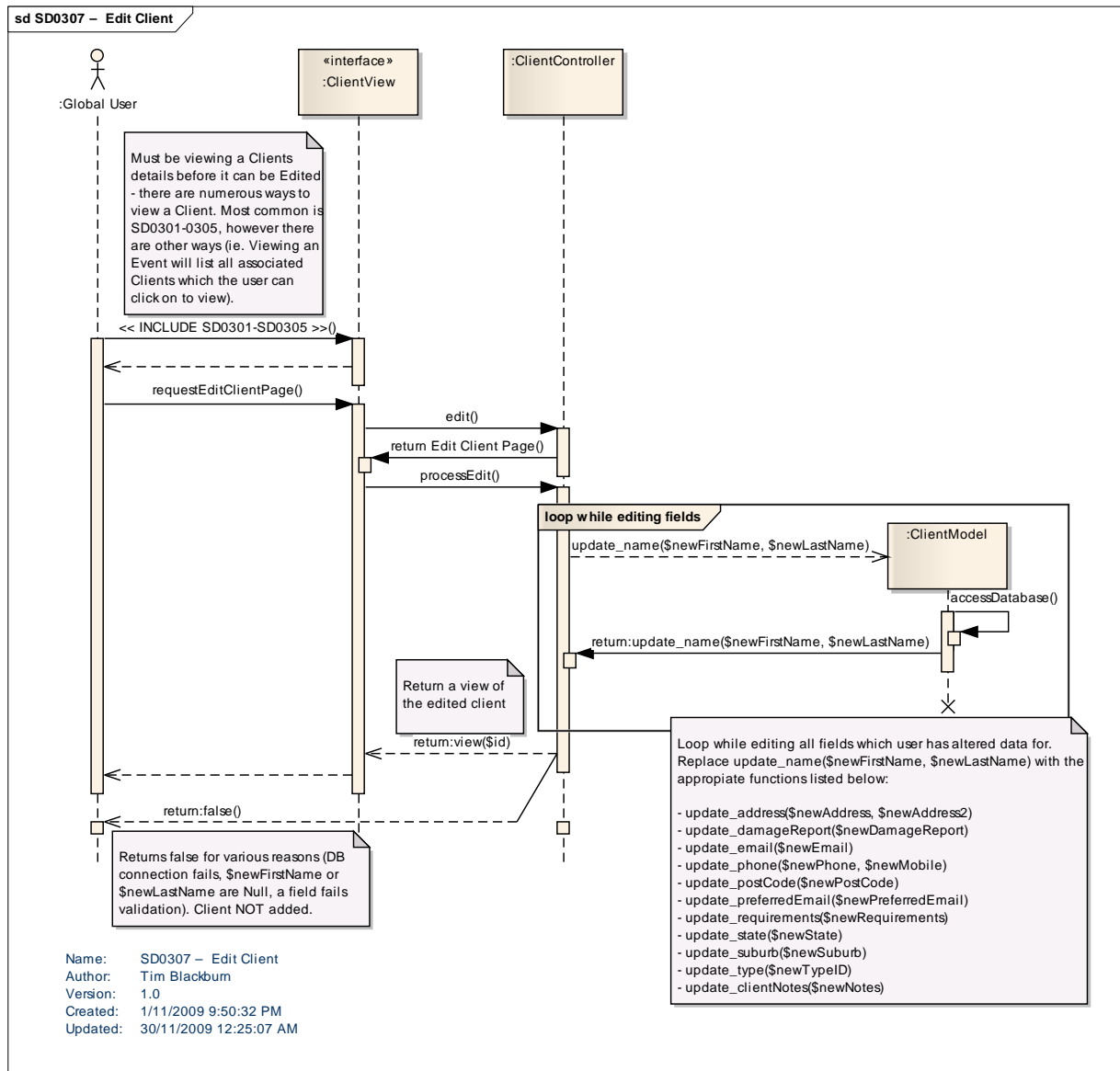
### 5.6. SD0204 – Archive EOC Log



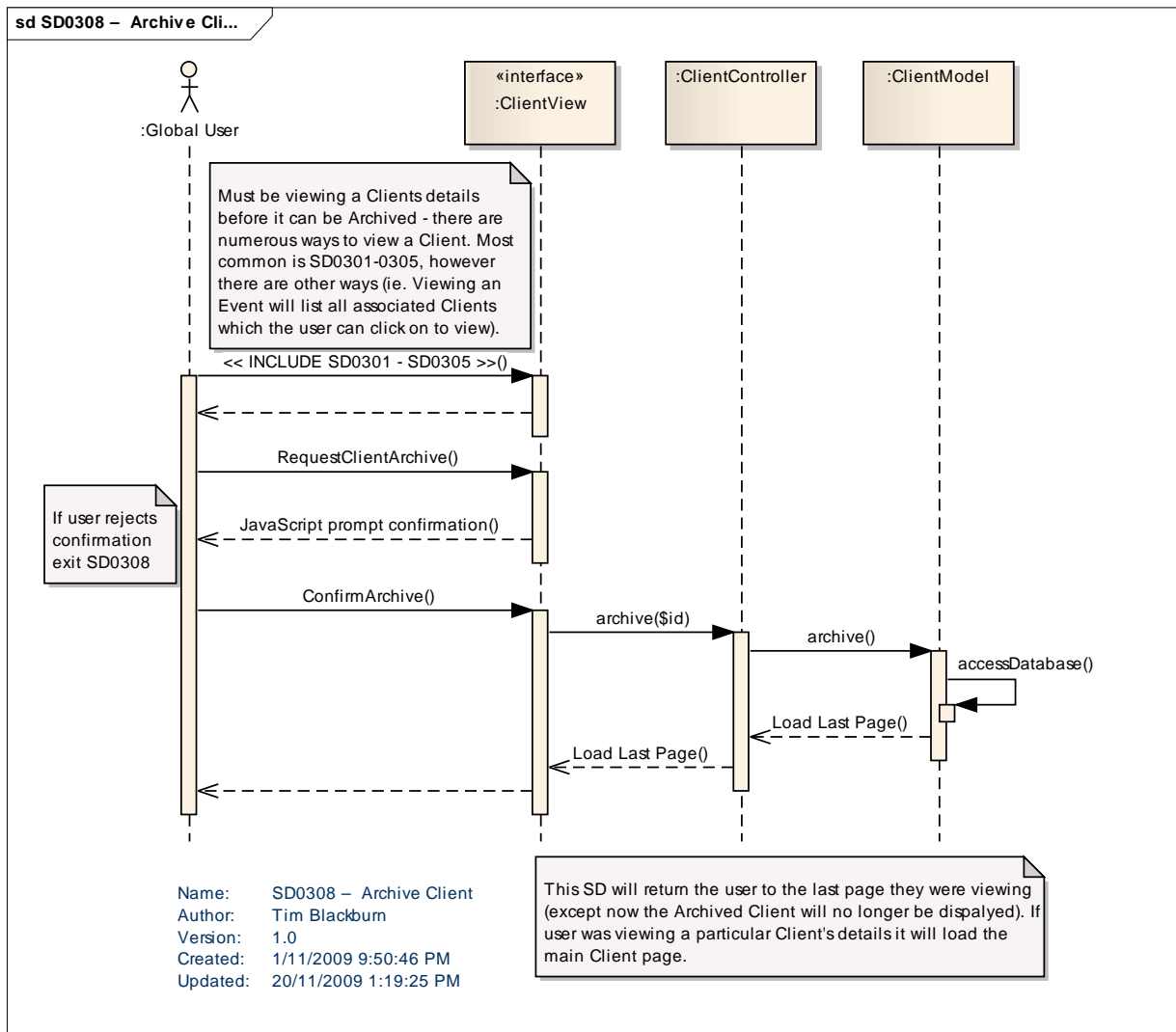
### 5.7. SD0306 – Add Client



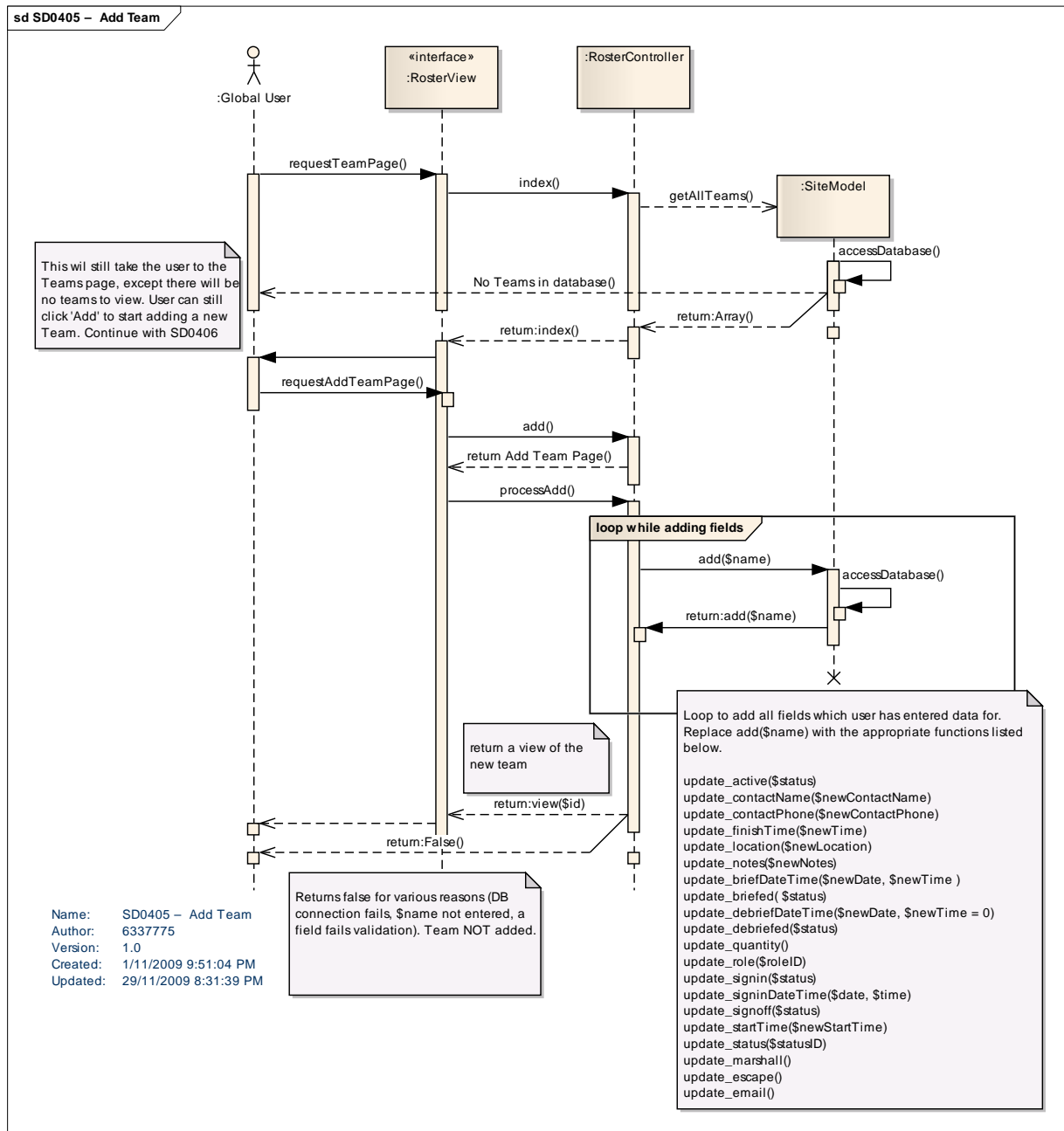
5.8. SD0307 – Edit Client



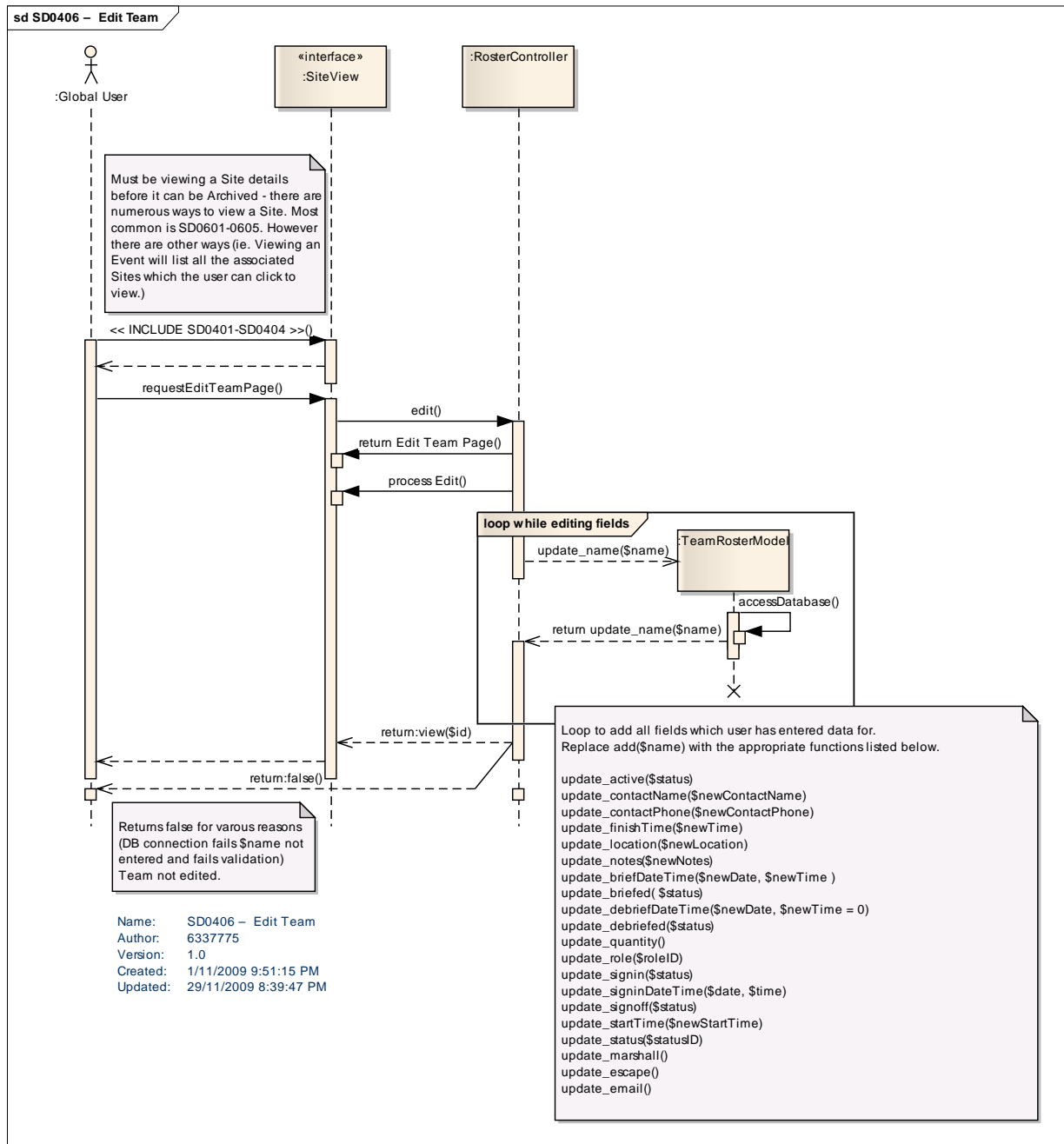
5.9. SD0308 – Archive Client



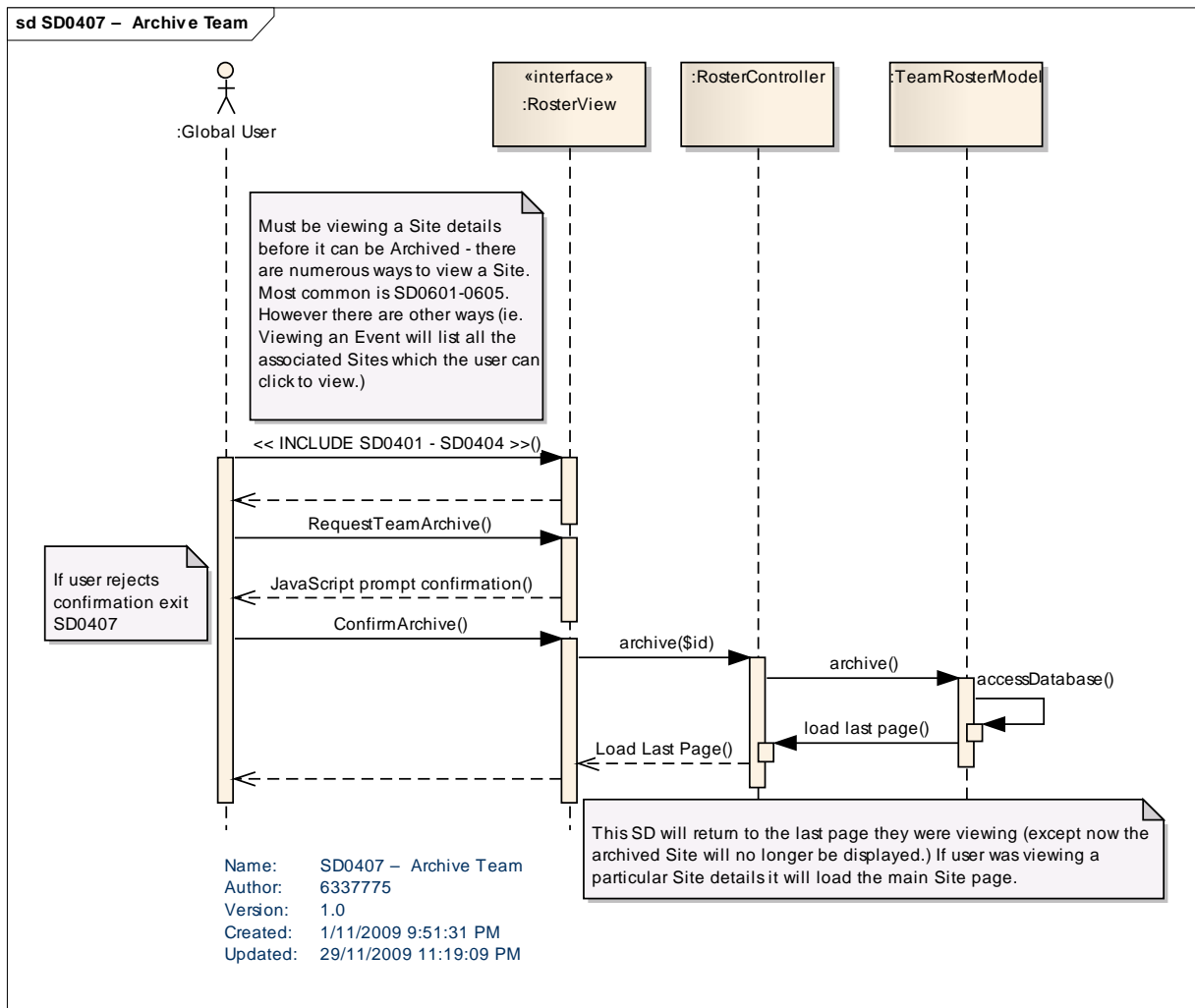
### 5.10. SD0405 – Add Team



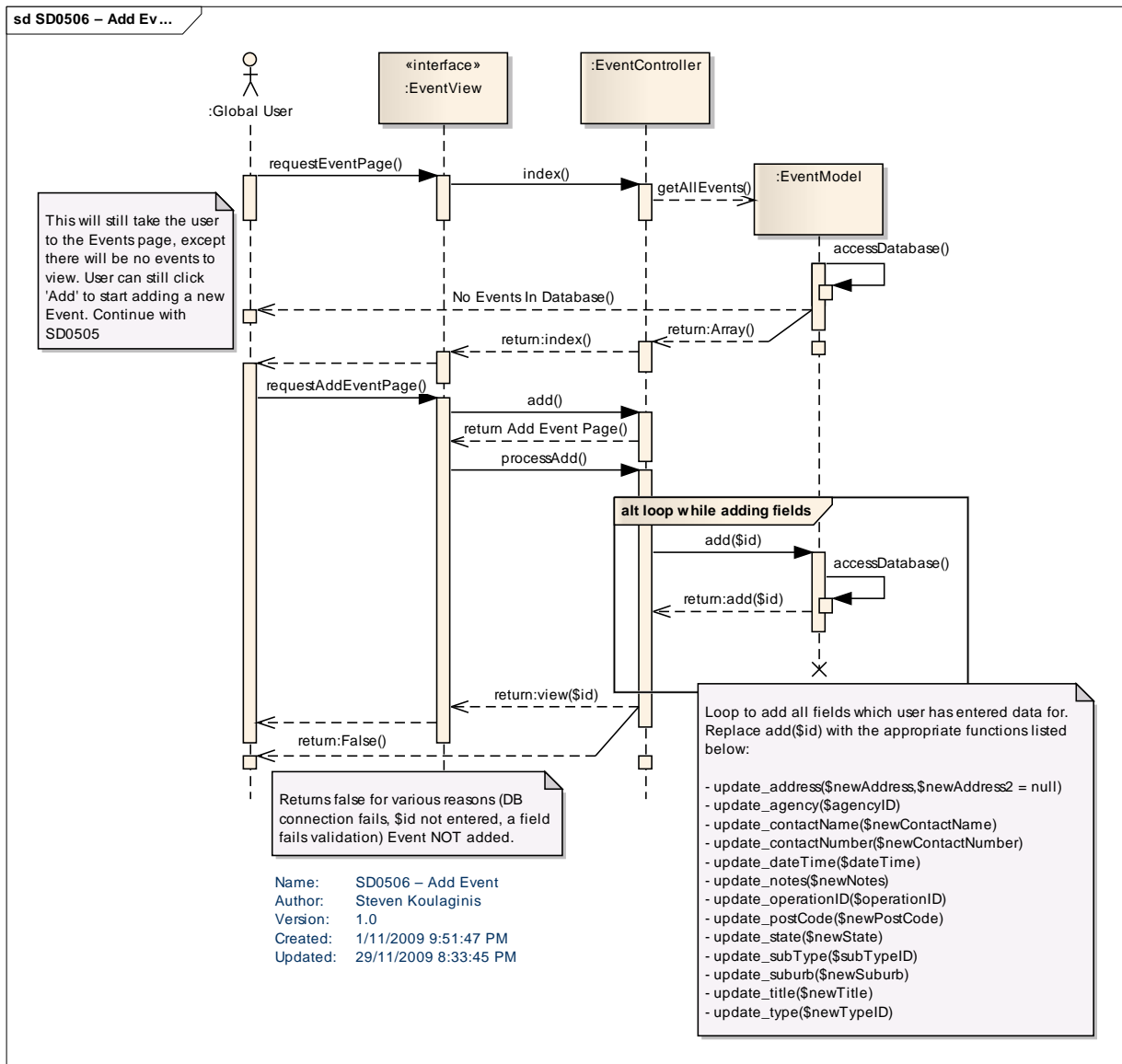
5.11. SD0406 – Edit Team



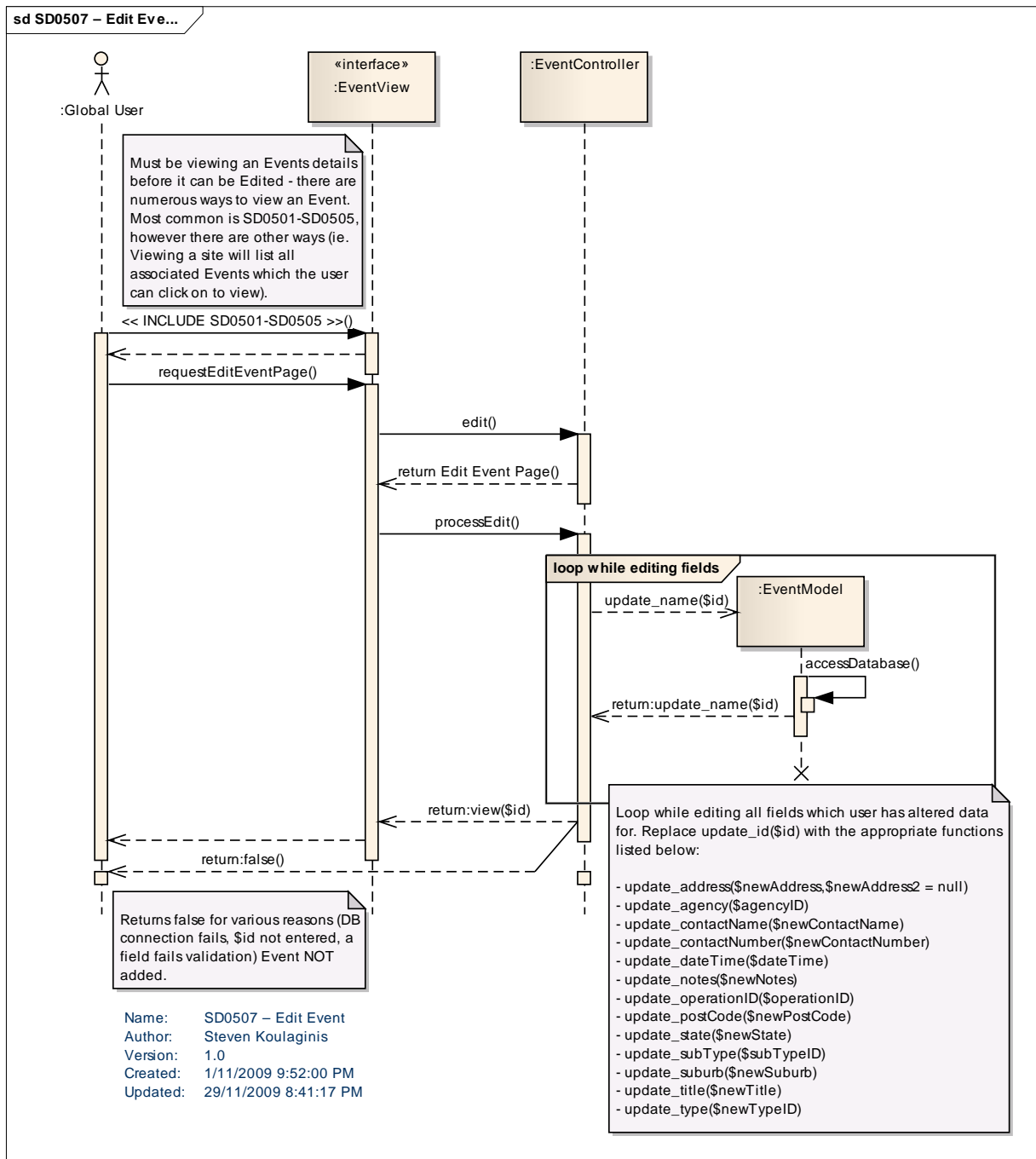
5.12. SD0407 – Archive Team



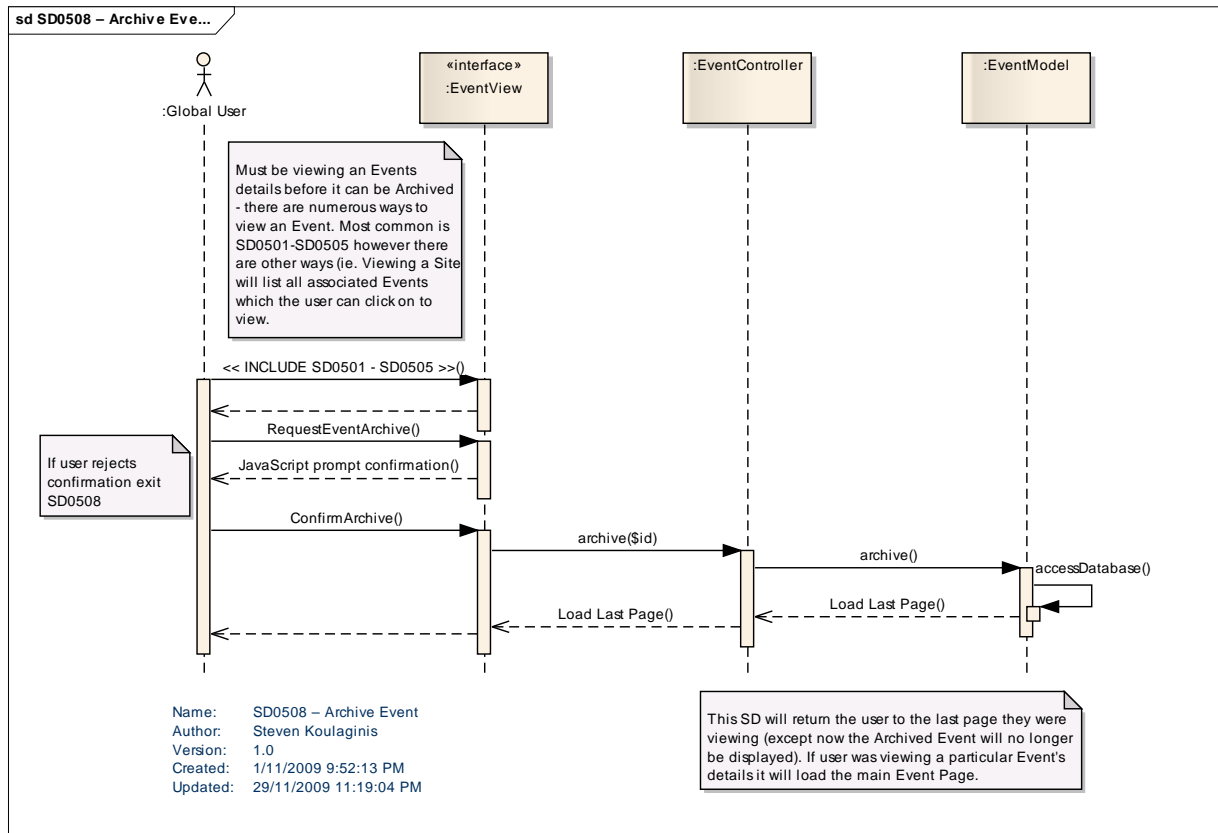
5.13. SD0506 – Add Event



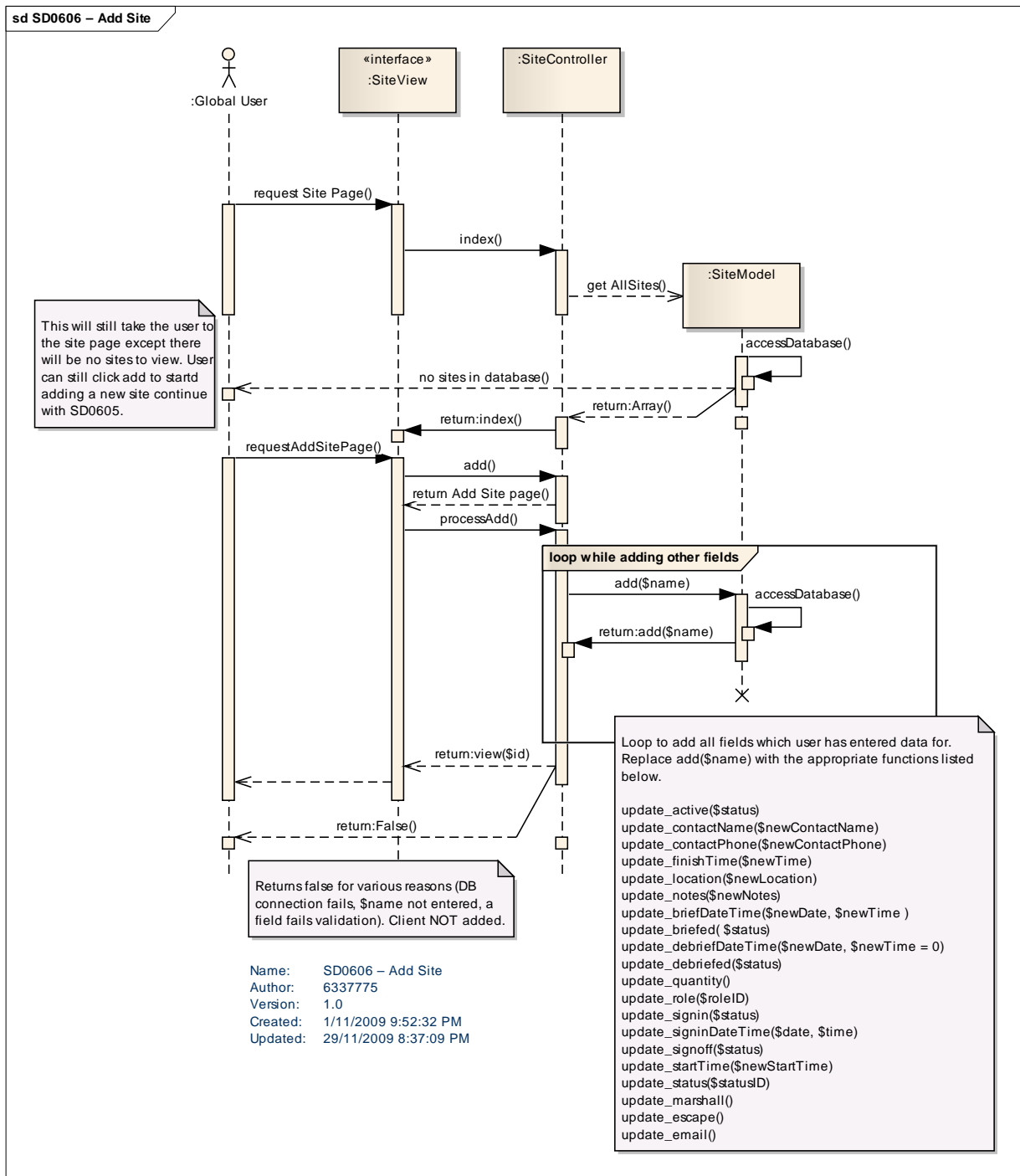
### 5.14. SD0507 – Edit Event



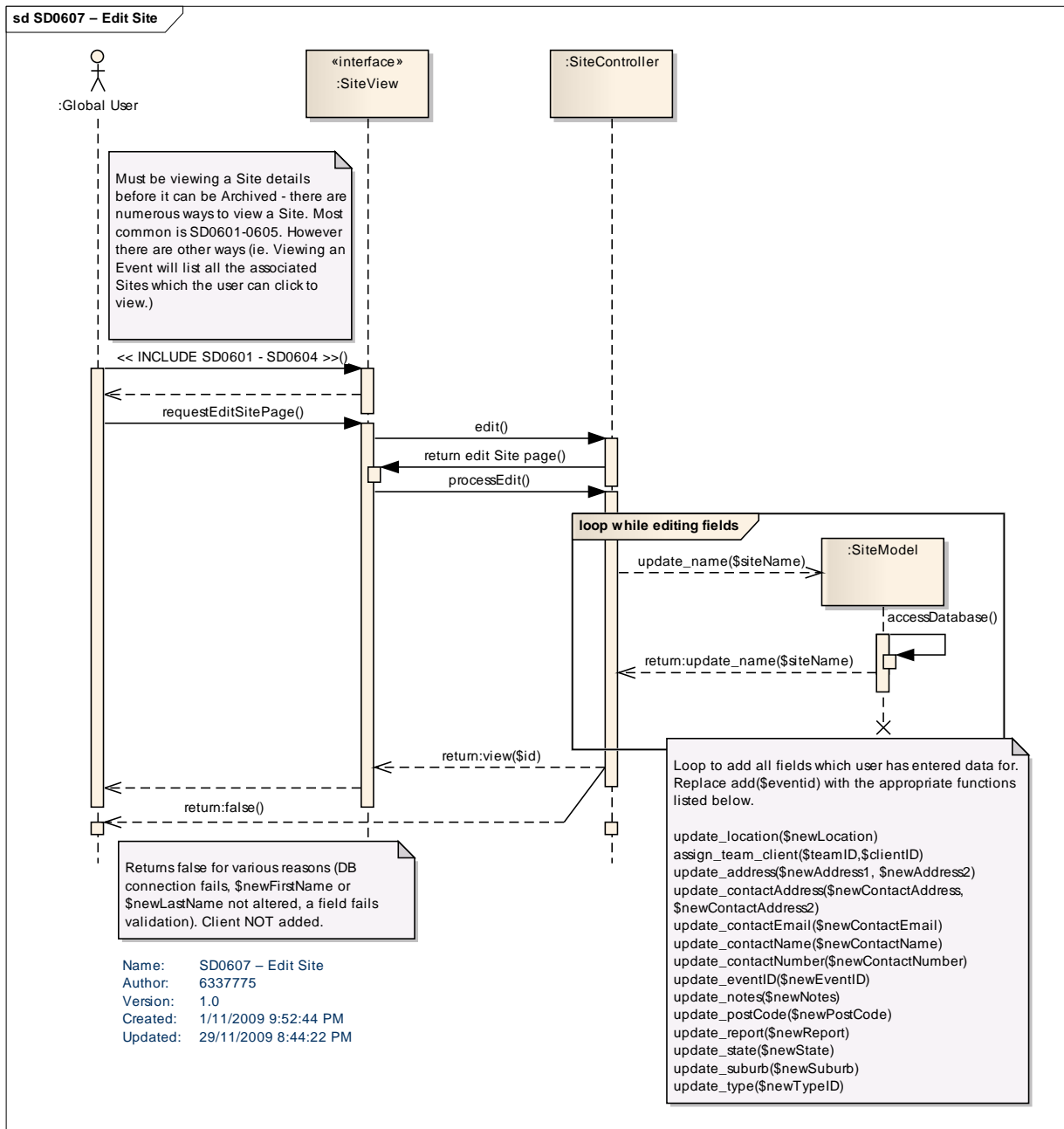
### 5.15. SD0508 – Archive Event



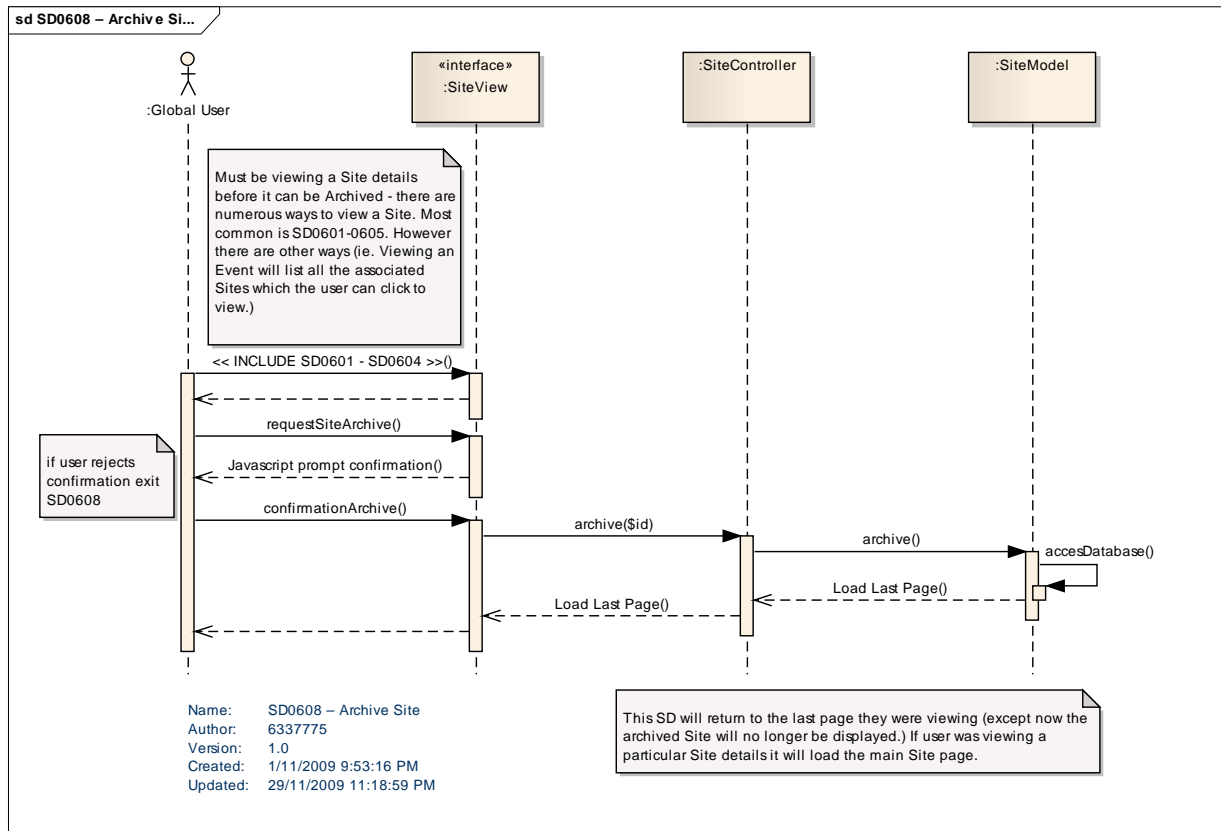
5.16. SD0606 – Add Site



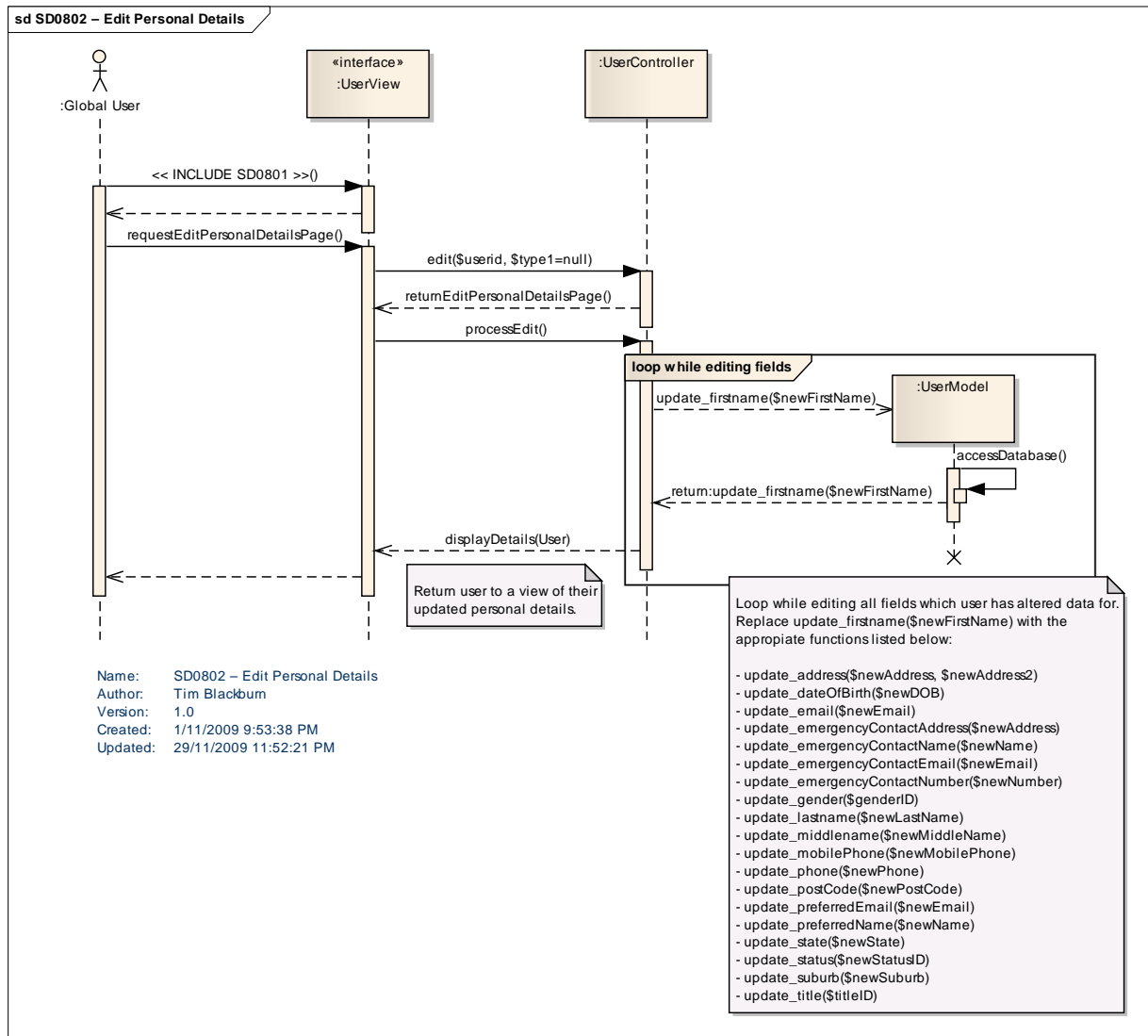
5.17. SD0607 – Edit Site



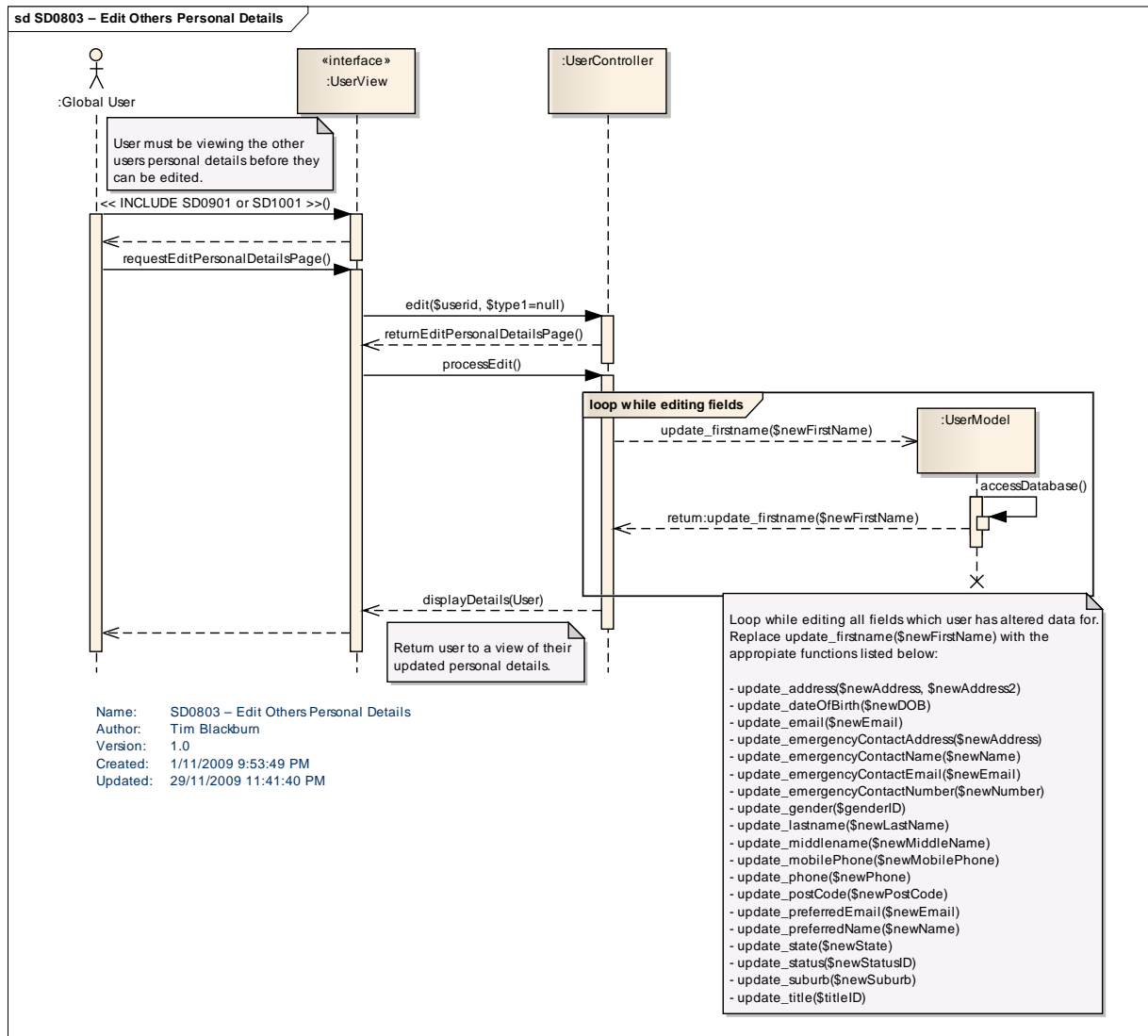
5.18. SD0608 – Archive Site



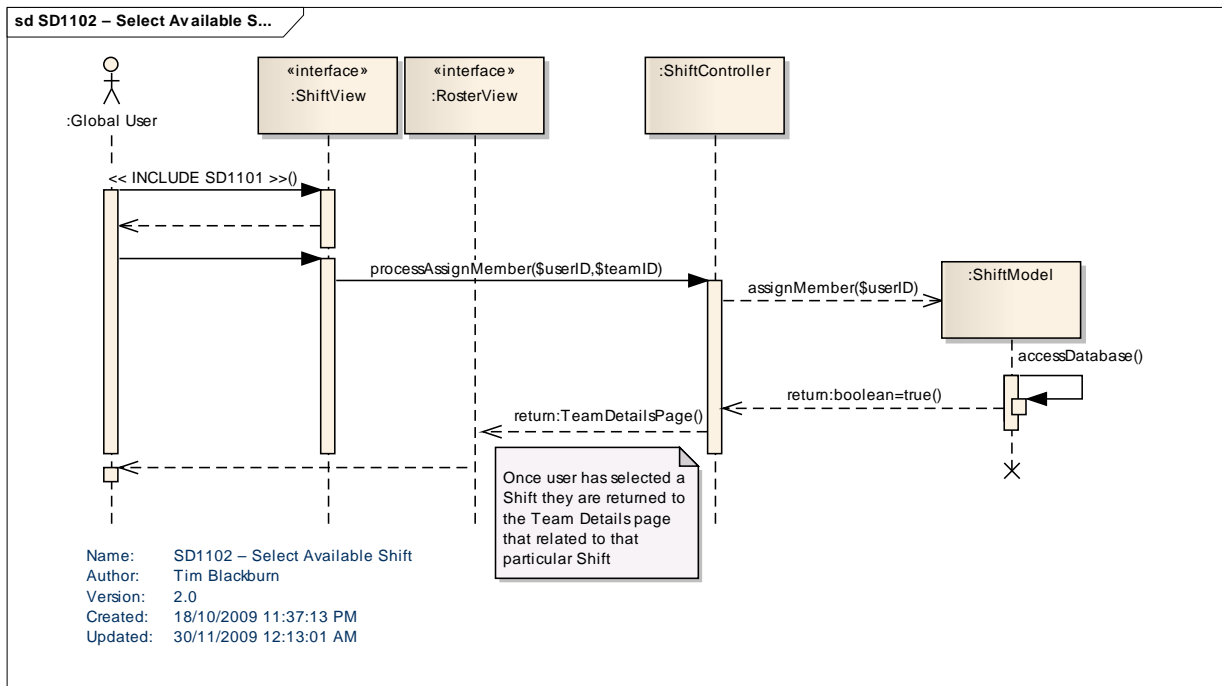
### 5.19. SD0802 – Edit Personal Details



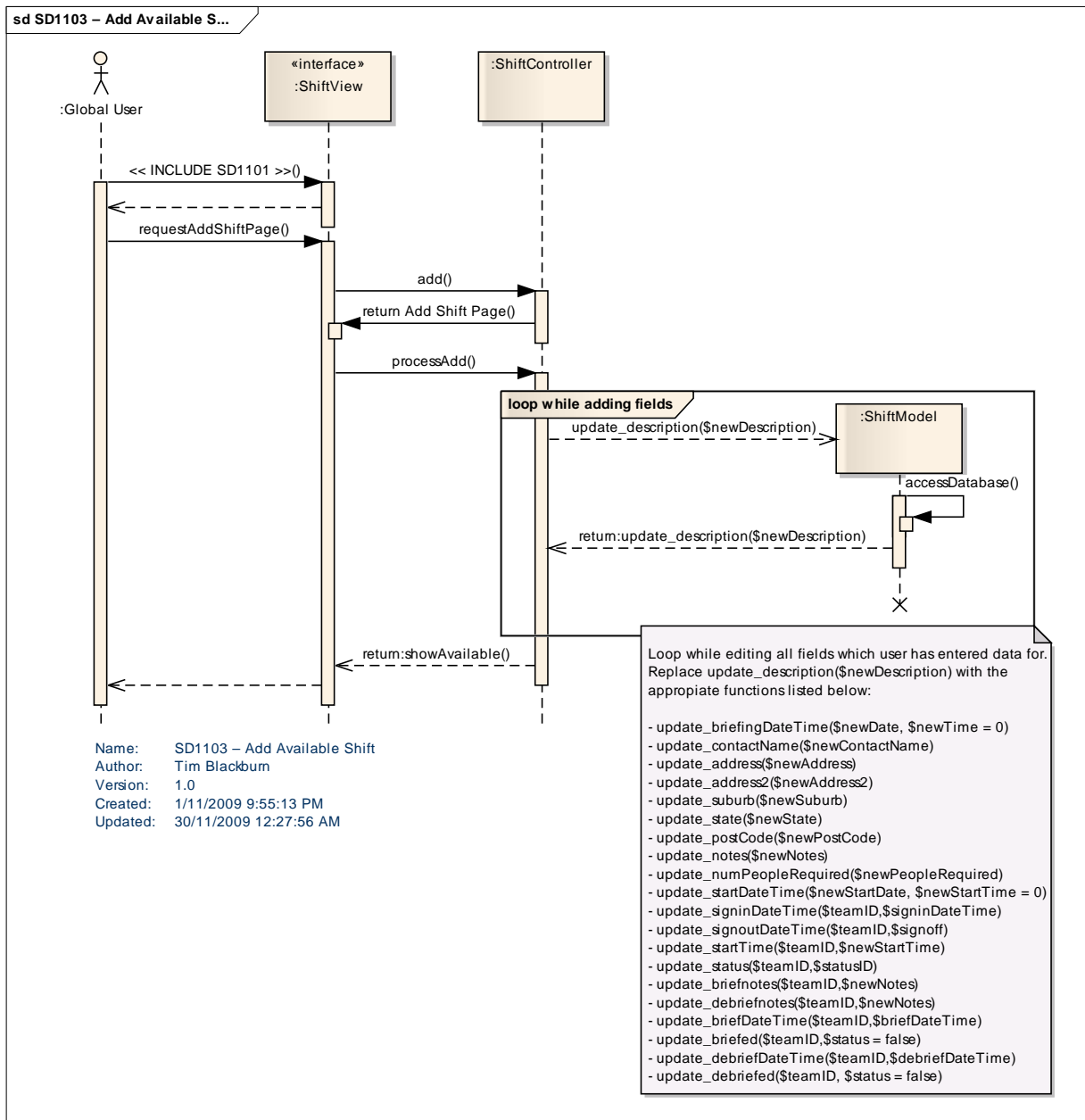
### 5.20. SD0803 – Edit Others Personal Details



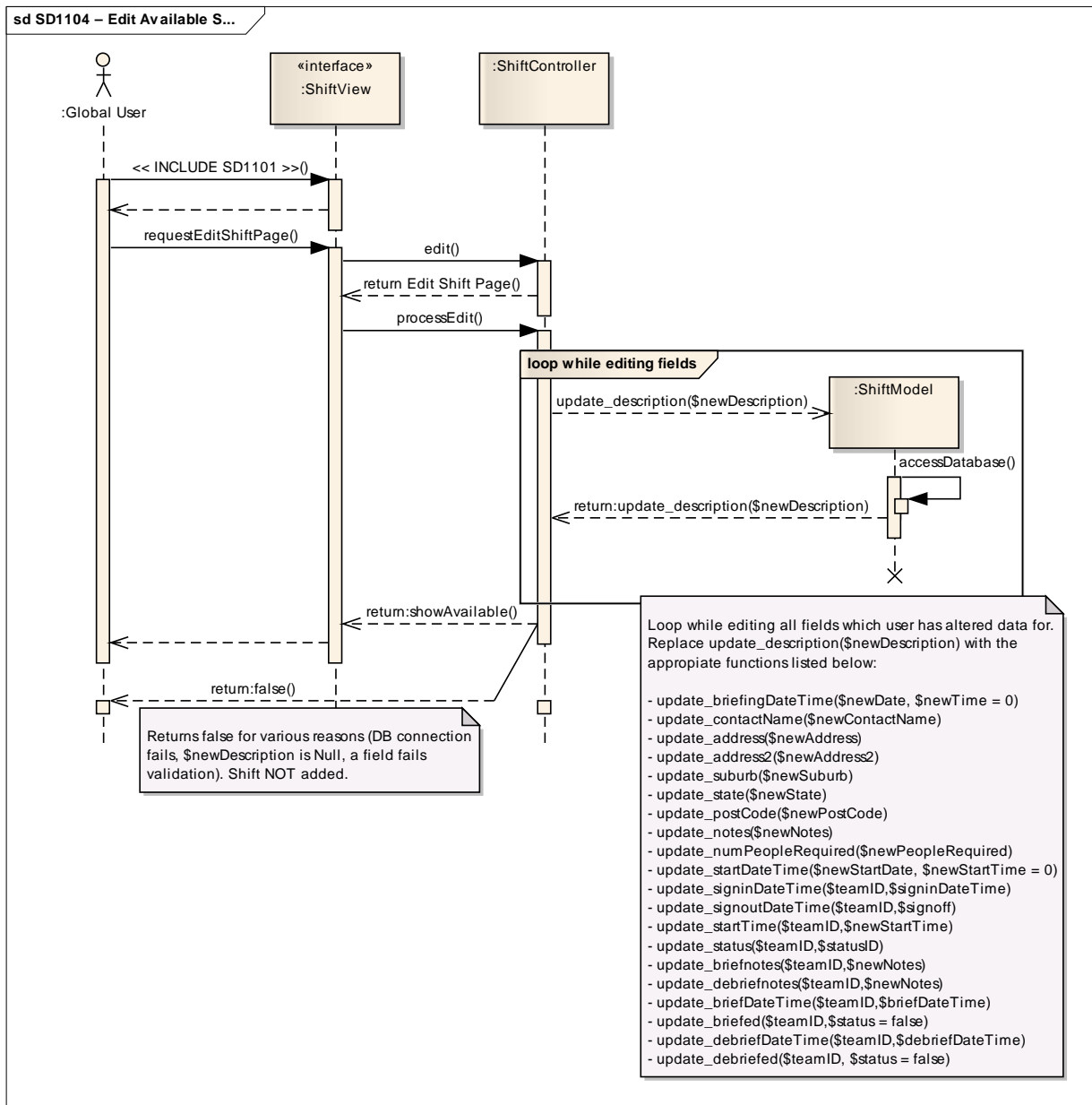
### 5.21. SD1102 – Select Available Shift



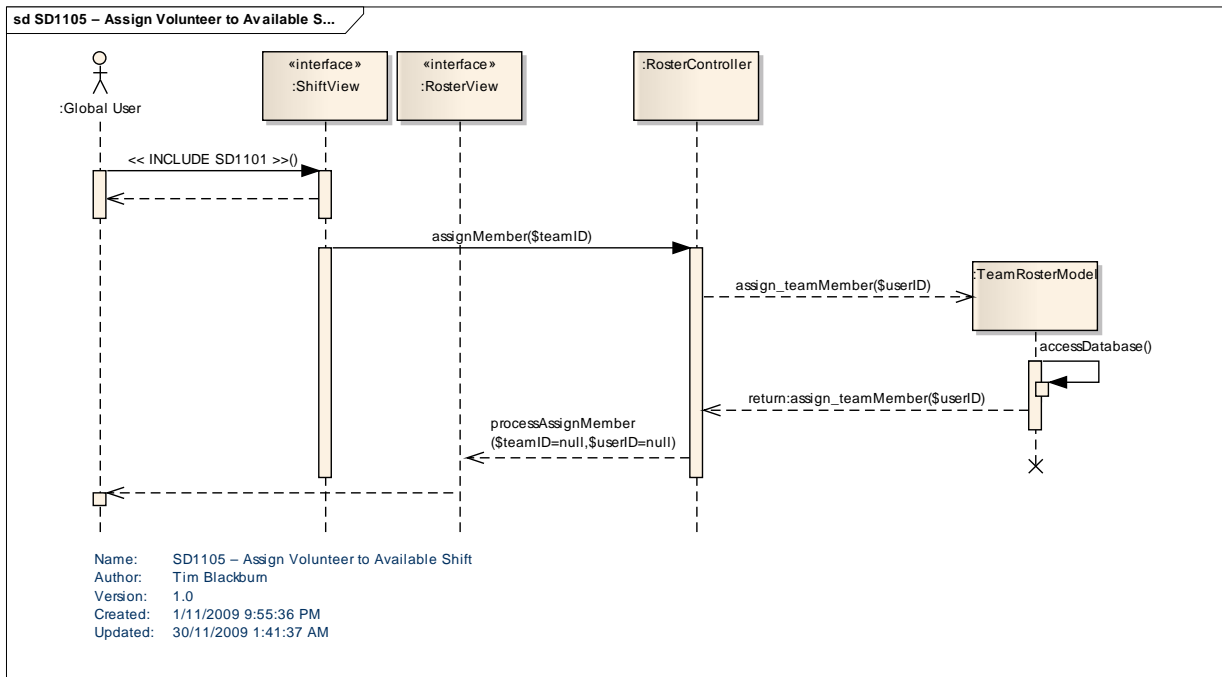
5.22. SD1103 – Add Available Shift



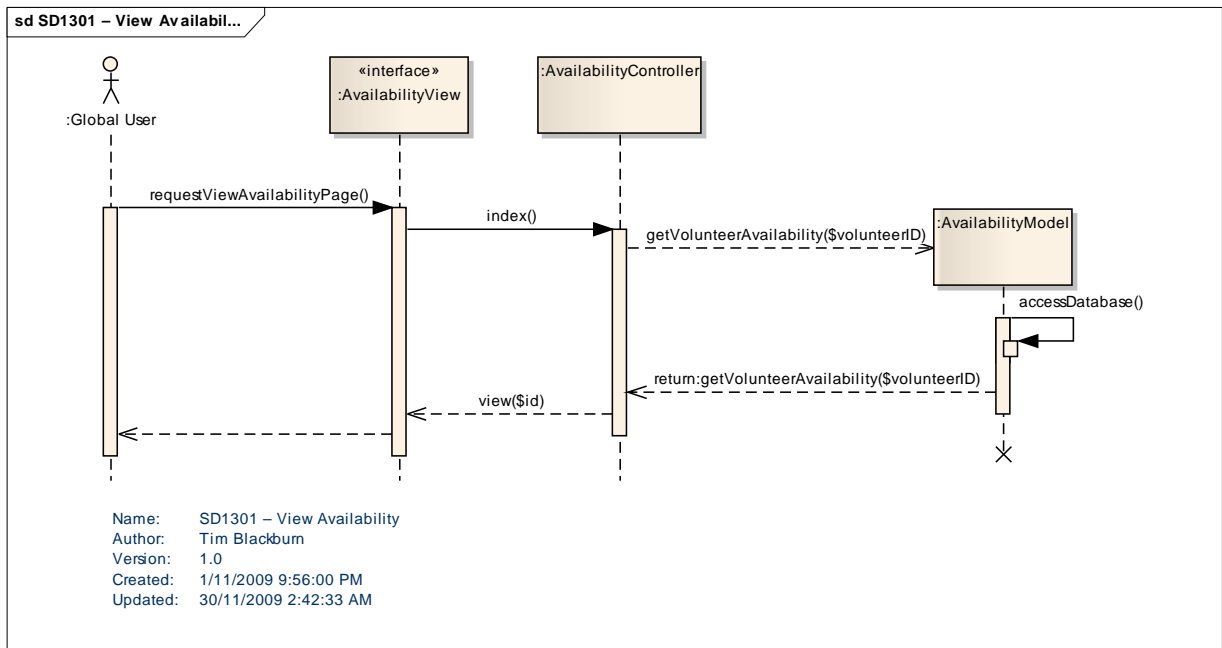
### 5.23. SD1104 – Edit Available Shift



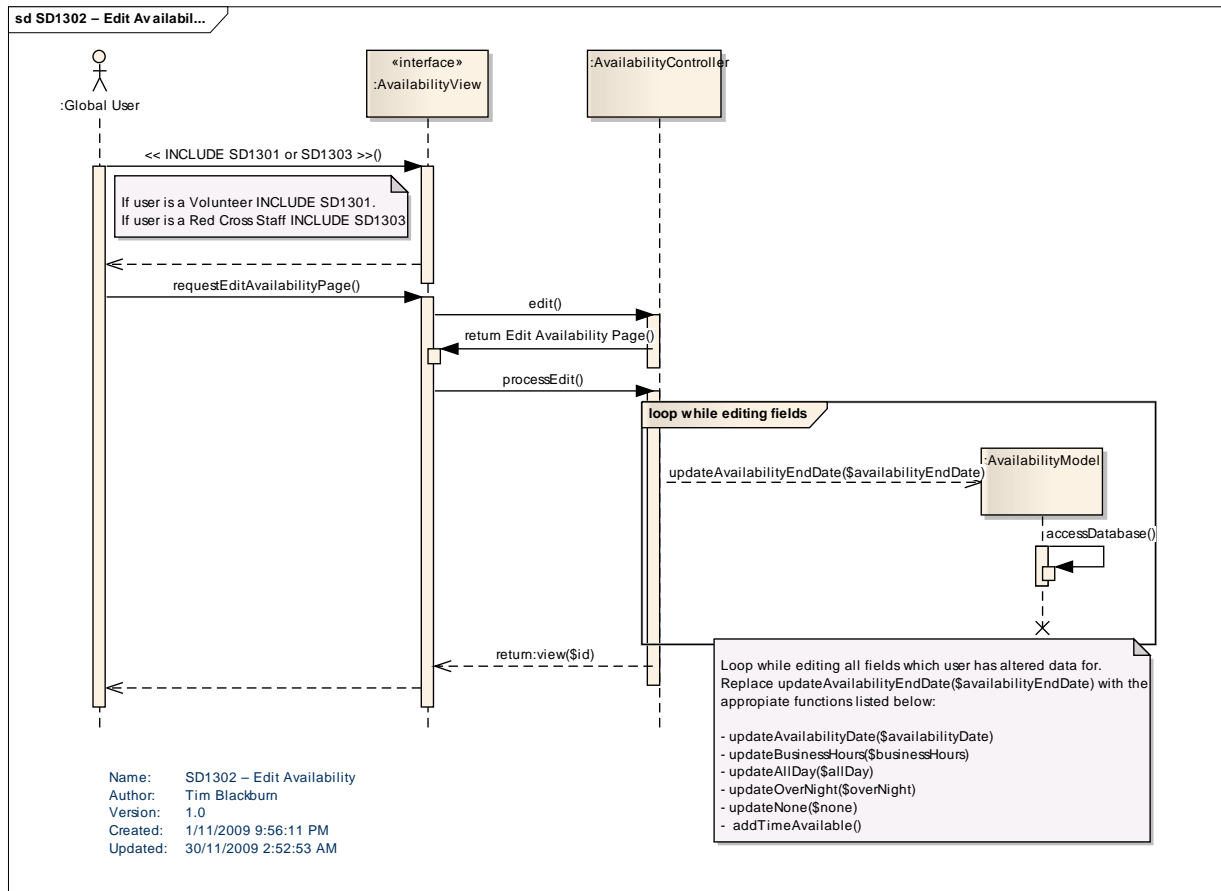
### 5.24. SD1105 – Assign Volunteer to Available Shift



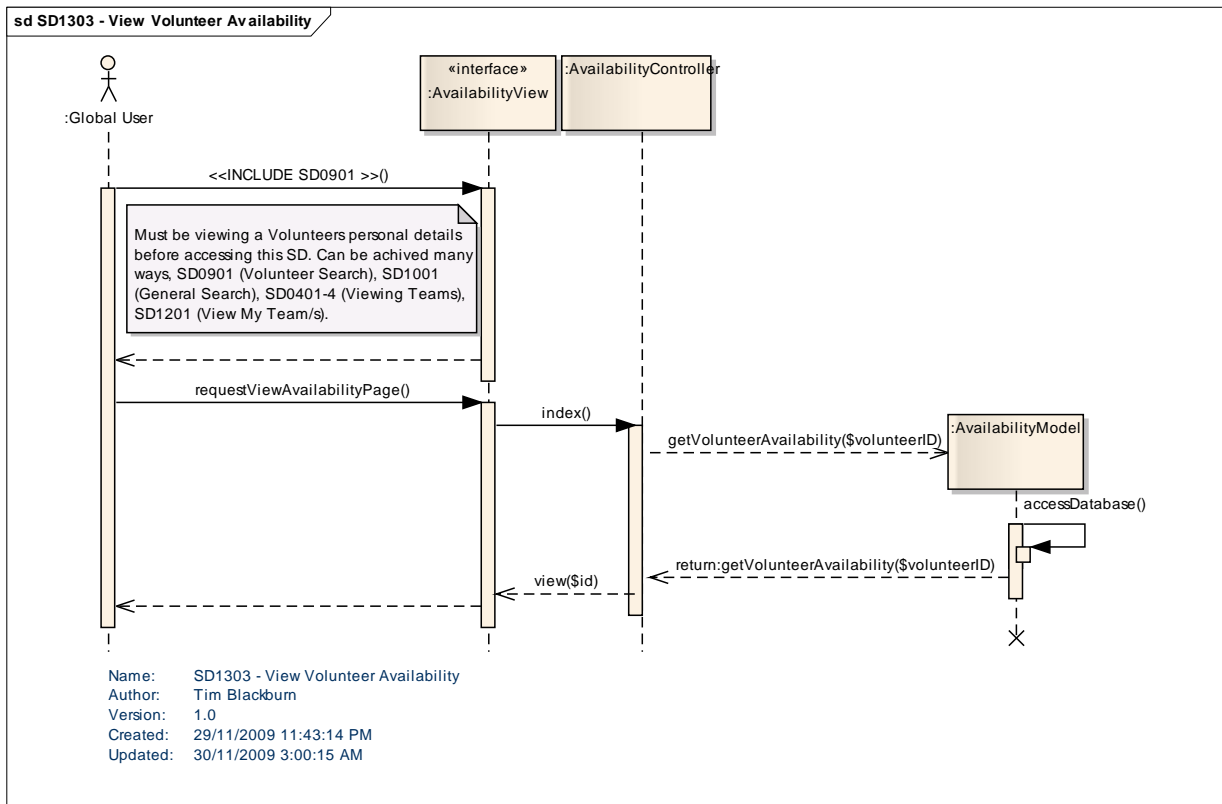
### 5.25. SD1301 – View Availability



### 5.26. SD1302 – Edit Availability



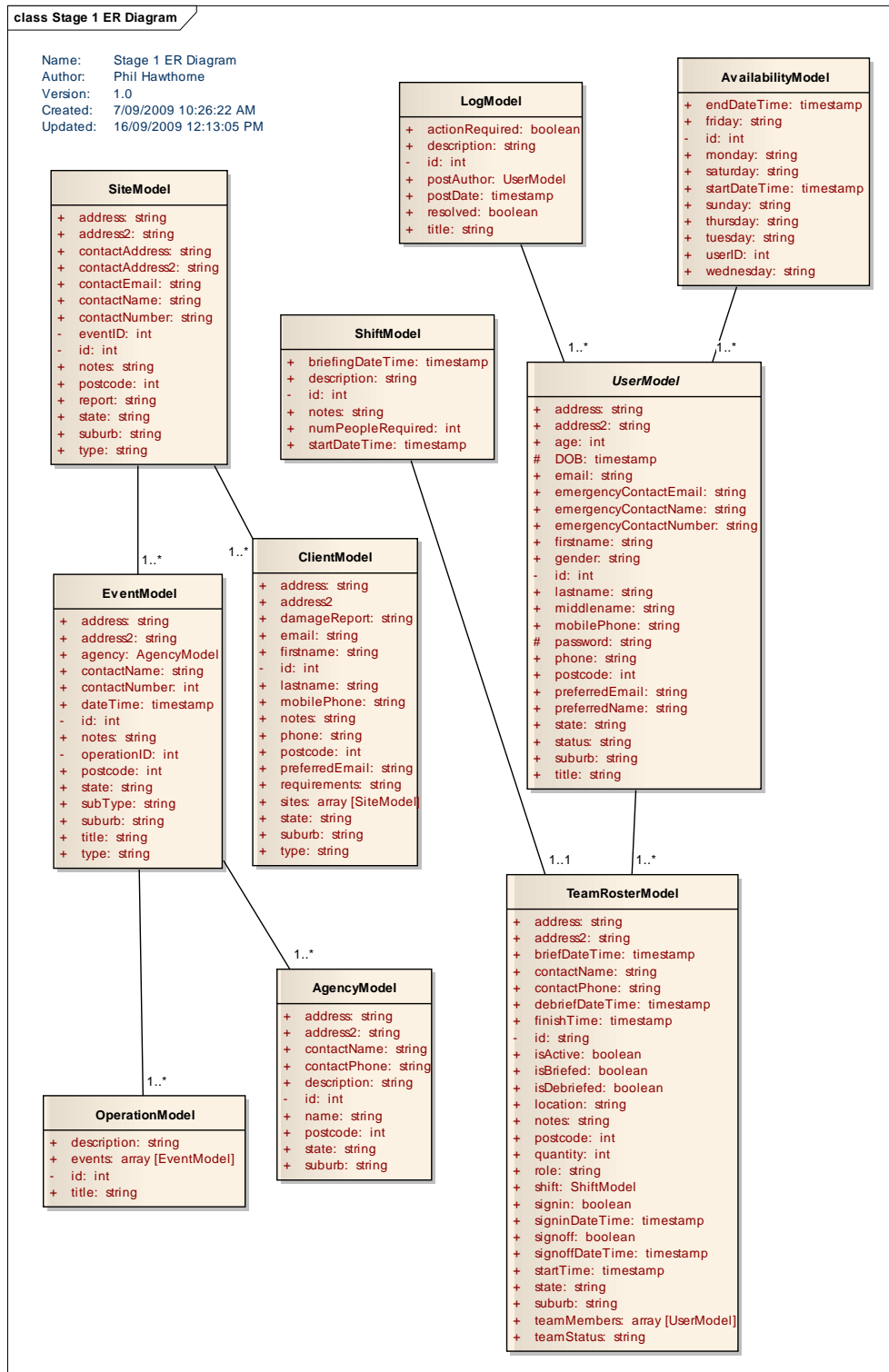
### 5.27. SD1303 – View Volunteers Availability



# 6. Database Design

## 6.1 Entity Relationship Diagram

For a fully comprehensive list of Variables refer to 'Class Diagrams' pages 10-11.



## 6.2 Database Dictionary

Due to the large nature of the SwinCross database, which the Field System web application is interacting with, an example of one table is provided below. For the full Database Dictionary please refer to Appendix A – Full Database Dictionary.

### EOCLogTBL

#### Fields

Field	Type	Collation	Null	Key	Default	Extra	Privileges
EOCLogID	int(10) unsigned	(NULL)	NO	PRI	(NULL)	auto_increment	select,insert,update,re
EOCDate	varchar(20)	latin1_swedish_ci	YES		(NULL)		select,insert,update,re
EOCTime	int(10) unsigned	(NULL)	YES		(NULL)		select,insert,update,re
EOCAuthorName	varchar(45)	latin1_swedish_ci	YES		(NULL)		select,insert,update,re
EOCActionRequired	tinyint(1)	(NULL)	YES		(NULL)		select,insert,update,re
EOCResolved	tinyint(1)	(NULL)	YES		(NULL)		select,insert,update,re
EOCDescription	blob	(NULL)	YES		(NULL)		select,insert,update,re
EOCTitle	varchar(255)	latin1_swedish_ci	YES		(NULL)		select,insert,update,re
EOCDetails	blob	(NULL)	YES		(NULL)		select,insert,update,re

#### Indexes

Table	Non unique	Key name	Seq in index	Column name	Collation	Cardinality	Sub part	Packed	Null	Index type	Comm
EOCLogTBL	0	PRIMARY	1	EOCLogID	A	0	(NULL)	(NULL)		BTREE	

## 7. References

### System Design Model – Stage 1

[http://cit3.ldl.swin.edu.au/~swinfield/documents/systemdesignmodel/system\\_design\\_model\\_s1\\_V1.3.pdf](http://cit3.ldl.swin.edu.au/~swinfield/documents/systemdesignmodel/system_design_model_s1_V1.3.pdf)

### Requirements Model – Stage 1

[http://cit3.ldl.swin.edu.au/~swinfield/documents/Requirements%20Model/requirements\\_model\\_Stage1\\_V4.1.pdf](http://cit3.ldl.swin.edu.au/~swinfield/documents/Requirements%20Model/requirements_model_Stage1_V4.1.pdf)

### Requirements Model – Stage 2

[http://cit3.ldl.swin.edu.au/~swinfield/documents/Requirements%20Model/requirements\\_model\\_Stage2\\_V2.0.pdf](http://cit3.ldl.swin.edu.au/~swinfield/documents/Requirements%20Model/requirements_model_Stage2_V2.0.pdf)

## 8. Appendix

### 8.1 Full Database Dictionary

- [AccessTBL](#)
- [AgenciesTBL](#)
- [AvailablityTBL](#)
- [ClientOutComeTBL](#)
- [ClientOutComeTBL has ClientTBL](#)
- [ClientTBL](#)
- [ClientTypeTBL](#)
- [EOCLogTBL](#)
- [EventTBL](#)
- [GenderTBL](#)
- [OperationTBL](#)
- [PublicLogTBL](#)
- [ReferralTBL](#)
- [ResourceStatusTBL](#)
- [ResourceTBL](#)
- [RosterRoleTBL](#)
- [ShiftTBL](#)
- [SiteTBL](#)
- [SiteTBL has TeamTBL](#)
- [SkillsTBL](#)
- [StaffPWordTBL](#)
- [StaffStatusTBL](#)
- [StaffTBL](#)
- [StaffTBL has TeamTBL](#)
- [SubTypeTBL](#)
- [TeamRosterTBL](#)
- [TeamStatusTBL](#)
- [TeamTBL has ResourceTBL](#)
- [TeamTBL has VolunteerTBL](#)
- [TimeAvailableTBL](#)
- [TitleTBL](#)
- [TypeTBL](#)
- [TypeTBL has EventTBL](#)
- [TypeTBL has SiteTBL](#)
- [VolunteerPWordTBL](#)
- [VolunteerStatusTBL](#)
- [VolunteerTBL](#)

AccessTBL

Fields

Field	Type	Collation	Null	Key	Default	Extra	Privileges	C
AccessID	int(10) unsigned	(NULL)	NO	PRI	(NULL)	auto_increment	select,insert,update,references	
accessLevel	varchar(20)	latin1_swedish_ci	YES		(NULL)		select,insert,update,references	

Indexes

Table	Non unique	Key name	Seq in index	Column name	Collation	Cardinality	Sub part	Packed	Null	Index type	Comment
AccessTBL	0	PRIMARY	1	AccessID	A	4	(NULL)	(NULL)		BTREE	

AgenciesTBL

Fields

Field	Type	Collation	Null	Key	Default	Extra	Privileges
AgencyID	int(10) unsigned	(NULL)	NO	PRI	(NULL)	auto_increment	select,insert,update,reference
agencyName	varchar(255)	latin1_swedish_ci	YES		(NULL)		select,insert,update,reference
agencyAddress	varchar(255)	latin1_swedish_ci	YES		(NULL)		select,insert,update,reference
agencyState	varchar(45)	latin1_swedish_ci	YES		(NULL)		select,insert,update,reference
agencySuburb	varchar(45)	latin1_swedish_ci	YES		(NULL)		select,insert,update,reference
agencyPostCode	int(10) unsigned	(NULL)	YES		(NULL)		select,insert,update,reference
agencyDescription	blob	(NULL)	YES		(NULL)		select,insert,update,reference
agencyContactName	varchar(255)	latin1_swedish_ci	YES		(NULL)		select,insert,update,reference
agencyContactPhone	varchar(20)	latin1_swedish_ci	YES		(NULL)		select,insert,update,reference
agencyArchive	tinyint(1)	(NULL)	YES		(NULL)		select,insert,update,reference

Indexes

Table	Non unique	Key name	Seq in index	Column name	Collation	Cardinality	Sub part	Packed	Null	Index type	Comments
AgenciesTBL	0	PRIMARY	1	AgencyID	A	2	(NULL)	(NULL)		BTREE	

AvailabilityTBL

Fields

Field	Type	Collation	Null	Key	Default	Extra	Privileges
AvailabilityID	int(10) unsigned	(NULL)	NO	PRI	(NULL)	auto_increment	select,insert,update,references
TimeAvailableID	int(10) unsigned	(NULL)	NO				select,insert,update,references
availabilityDate	varchar(20)	latin1_swedish_ci	YES		(NULL)		select,insert,update,references

Indexes

Table	Non unique	Key name	Seq in index	Column name	Collation	Cardinality	Sub part	Packed	Null	Index type	C
AvailabilityTBL	0	PRIMARY	1	AvailabilityID	A	0	(NULL)	(NULL)		BTREE	

ClientOutComeTBL

Fields

Field	Type	Collation	Null	Key	Default	Extra	Privileges
ClientOutComeID	int(10) unsigned	(NULL)	NO	PRI	(NULL)	auto_increment	select,insert,update,refere
Outcome	varchar(45)	latin1_swedish_ci	YES		(NULL)		select,insert,update,refere

Indexes

Table	Non unique	Key name	Seq in index	Column name	Collation	Cardinality	Sub part	Packed	Null	In ty
ClientOutComeTBL	0	PRIMARY	1	ClientOutComeID	A	0	(NULL)	(NULL)		B

ClientOutComeTBL\_has\_ClientTBL

Fields

Field	Type	Collation	Null	Key	Default	Extra	Privileges	Com
ClientOutComeID	int(10) unsigned	(NULL)	NO				select,insert,update,references	
ClientID	int(10) unsigned	(NULL)	NO				select,insert,update,references	
outcomeDate	varchar(20)	latin1_swedish_ci	YES		(NULL)		select,insert,update,references	
outcomeTime	int(10) unsigned	(NULL)	YES		(NULL)		select,insert,update,references	

Indexes

ClientTBL

Fields

Field	Type	Collation	Null	Key	Default	Extra	Privileges
ClientID	int(10) unsigned	(NULL)	NO	PRI	(NULL)	auto_increment	select,insert,update,ref
ClientTypeID	int(10) unsigned	(NULL)	NO				select,insert,update,ref
clientFName	varchar(45)	latin1_swedish_ci	YES		(NULL)		select,insert,update,ref
clientLName	varchar(45)	latin1_swedish_ci	YES		(NULL)		select,insert,update,ref
clientAddress	varchar(255)	latin1_swedish_ci	YES		(NULL)		select,insert,update,ref
clientSuburb	varchar(45)	latin1_swedish_ci	YES		(NULL)		select,insert,update,ref
clientState	varchar(45)	latin1_swedish_ci	YES		(NULL)		select,insert,update,ref
clientPostCode	int(10) unsigned	(NULL)	YES		(NULL)		select,insert,update,ref
clientPhone	varchar(20)	latin1_swedish_ci	YES		(NULL)		select,insert,update,ref
clientDamageReport	blob	(NULL)	YES		(NULL)		select,insert,update,ref
clientRequirements	blob	(NULL)	YES		(NULL)		select,insert,update,ref
clientArchive	tinyint(1)	(NULL)	YES		(NULL)		select,insert,update,ref
clientEmail	varchar(255)	latin1_swedish_ci	YES		(NULL)		select,insert,update,ref
clientNotes	blob	(NULL)	YES		(NULL)		select,insert,update,ref
clientMobile	varchar(20)	latin1_swedish_ci	YES		(NULL)		select,insert,update,ref
clientPreferredEmail	varchar(255)	latin1_swedish_ci	YES		(NULL)		select,insert,update,ref
TeamSiteID	int(10) unsigned	(NULL)	NO				select,insert,update,ref

Indexes

Table	Non unique	Key name	Seq in index	Column name	Collation	Cardinality	Sub part	Packed	Null	Index type	Comment
ClientTBL	0	PRIMARY	1	ClientID	A	0	(NULL)	(NULL)		BTREE	

ClientTypeTBL

Fields

Field	Type	Collation	Null	Key	Default	Extra	Privileges
ClientTypeID	int(10) unsigned	(NULL)	NO	PRI	(NULL)	auto_increment	select,insert,update,references
clientType	varchar(45)	latin1_swedish_ci	YES		(NULL)		select,insert,update,references

Indexes

Table	Non unique	Key name	Seq in index	Column name	Collation	Cardinality	Sub part	Packed	Null	Index type	C
ClientTypeTBL	0	PRIMARY	1	ClientTypeID	A	0	(NULL)	(NULL)		BTREE	

EOCLogTBL

Fields

Field	Type	Collation	Null	Key	Default	Extra	Privileges
EOCLogID	int(10) unsigned	(NULL)	NO	PRI	(NULL)	auto_increment	select,insert,update,re
EOCDate	varchar(20)	latin1_swedish_ci	YES		(NULL)		select,insert,update,re
EOCTime	int(10) unsigned	(NULL)	YES		(NULL)		select,insert,update,re
EOCAuthorName	varchar(45)	latin1_swedish_ci	YES		(NULL)		select,insert,update,re
EOCActionRequired	tinyint(1)	(NULL)	YES		(NULL)		select,insert,update,re
EOCResolved	tinyint(1)	(NULL)	YES		(NULL)		select,insert,update,re
EOCDescription	blob	(NULL)	YES		(NULL)		select,insert,update,re
EOCTitle	varchar(255)	latin1_swedish_ci	YES		(NULL)		select,insert,update,re
EOCDetails	blob	(NULL)	YES		(NULL)		select,insert,update,re

Indexes

Table	Non unique	Key name	Seq in index	Column name	Collation	Cardinality	Sub part	Packed	Null	Index type	Comm
EOCLogTBL	0	PRIMARY	1	EOCLogID	A	0	(NULL)	(NULL)		BTREE	

EventTBL

Fields

Field	Type	Collation	Null	Key	Default	Extra	Privileges
EventID	int(10) unsigned	(NULL)	NO	PRI	(NULL)	auto_increment	select,insert,update,delete
AgencyID	int(10) unsigned	(NULL)	NO		0		select,insert,update,delete
OperationID	int(10) unsigned	(NULL)	NO		0		select,insert,update,delete
eventTitle	varchar(255)	latin1_swedish_ci	YES		(NULL)		select,insert,update,delete
eventType	int(10) unsigned	(NULL)	YES		(NULL)		select,insert,update,delete
eventContactName	varchar(255)	latin1_swedish_ci	YES		(NULL)		select,insert,update,delete
eventContactNumber	varchar(20)	latin1_swedish_ci	YES		(NULL)		select,insert,update,delete
eventSubType	int(10) unsigned	(NULL)	YES		(NULL)		select,insert,update,delete
eventTime	int(10) unsigned	(NULL)	YES		(NULL)		select,insert,update,delete
eventDate	varchar(20)	latin1_swedish_ci	YES		(NULL)		select,insert,update,delete
eventAddress	varchar(255)	latin1_swedish_ci	YES		(NULL)		select,insert,update,delete
eventSuburb	varchar(45)	latin1_swedish_ci	YES		(NULL)		select,insert,update,delete
eventState	varchar(45)	latin1_swedish_ci	YES		(NULL)		select,insert,update,delete
eventPostCode	int(10) unsigned	(NULL)	YES		(NULL)		select,insert,update,delete
eventArchive	tinyint(1)	(NULL)	YES		(NULL)		select,insert,update,delete
eventNotes	blob	(NULL)	YES		(NULL)		select,insert,update,delete

Indexes

Table	Non unique	Key name	Seq in index	Column name	Collation	Cardinality	Sub part	Packed	Null	Index type	Comment
EventTBL	0	PRIMARY	1	EventID	A	4	(NULL)	(NULL)		BTREE	

GenderTBL

Fields

Field	Type	Collation	Null	Key	Default	Extra	Privileges	Comments
GenderID	int(10) unsigned	(NULL)	NO	PRI	(NULL)	auto_increment	select,insert,update,references	
gender	varchar(20)	latin1_swedish_ci	YES		(NULL)		select,insert,update,references	

Indexes

Table	Non unique	Key name	Seq in index	Column name	Collation	Cardinality	Sub part	Packed	Null	Index type	Comment
GenderTBL	0	PRIMARY	1	GenderID	A	2	(NULL)	(NULL)		BTREE	

OperationTBL

Fields

Field	Type	Collation	Null	Key	Default	Extra	Privileges
OperationID	int(10) unsigned	(NULL)	NO	PRI	(NULL)	auto_increment	select,insert,update,reference
operationName	varchar(255)	latin1_swedish_ci	NO				select,insert,update,reference

Indexes

Table	Non unique	Key name	Seq in index	Column name	Collation	Cardinality	Sub part	Packed	Null	Index type	Com
OperationTBL	0	PRIMARY	1	OperationID	A	0	(NULL)	(NULL)		BTREE	

PublicLogTBL

Fields

Field	Type	Collation	Null	Key	Default	Extra	Privileges
PublicLogID	int(10) unsigned	(NULL)	NO	PRI	(NULL)	auto_increment	select,insert,update,reference
logDate	varchar(20)	latin1_swedish_ci	YES		(NULL)		select,insert,update,reference
logTime	int(10) unsigned	(NULL)	YES		(NULL)		select,insert,update,reference
logAuthorName	varchar(45)	latin1_swedish_ci	YES		(NULL)		select,insert,update,reference
logActionRequired	tinyint(1)	(NULL)	YES		(NULL)		select,insert,update,reference
logResolved	tinyint(1)	(NULL)	YES		(NULL)		select,insert,update,reference
logOverview	blob	(NULL)	YES		(NULL)		select,insert,update,reference
logNotes	blob	(NULL)	YES		(NULL)		select,insert,update,reference
logDetails	blob	(NULL)	YES		(NULL)		select,insert,update,reference

Indexes

Table	Non unique	Key name	Seq in index	Column name	Collation	Cardinality	Sub part	Packed	Null	Index type	Con
PublicLogTBL	0	PRIMARY	1	PublicLogID	A	3	(NULL)	(NULL)		BTREE	

ReferralTBL

Fields

Field	Type	Collation	Null	Key	Default	Extra	Privileges	Comments
ReferralID	int(10) unsigned	(NULL)	NO	PRI			select,insert,update,references	
ClientID	int(10) unsigned	(NULL)	NO				select,insert,update,references	
AgencyID	int(10) unsigned	(NULL)	NO				select,insert,update,references	
referralDate	varchar(20)	latin1_swedish_ci	YES		(NULL)		select,insert,update,references	
referralTime	int(10) unsigned	(NULL)	YES		(NULL)		select,insert,update,references	
referralDetails	blob	(NULL)	YES		(NULL)		select,insert,update,references	

Indexes

Table	Non unique	Key name	Seq in index	Column name	Collation	Cardinality	Sub part	Packed	Null	Index type	Comments
ReferralTBL	0	PRIMARY	1	ReferralID	A	0	(NULL)	(NULL)		BTREE	

ResourceStatusTBL

Fields

Field	Type	Collation	Null	Key	Default	Extra	Privileges
ResourceStatusID	int(10) unsigned	(NULL)	NO	PRI	(NULL)	auto_increment	select,insert,update,reference
statusName	varchar(45)	latin1_swedish_ci	YES		(NULL)		select,insert,update,reference

Indexes

Table	Non unique	Key name	Seq in index	Column name	Collation	Cardinality	Sub part	Packed	Null	In type
ResourceStatusTBL	0	PRIMARY	1	ResourceStatusID	A	0	(NULL)	(NULL)		B

ResourceTBL

Fields

Field	Type	Collation	Null	Key	Default	Extra	Privileges
ResourceID	int(10) unsigned	(NULL)	NO	PRI	(NULL)	auto_increment	select,insert,update,ref
ResourceStatusID	int(10) unsigned	(NULL)	NO				select,insert,update,ref
resourceName	varchar(255)	latin1_swedish_ci	YES		(NULL)		select,insert,update,ref
resourceDescription	blob	(NULL)	YES		(NULL)		select,insert,update,ref
resourceQuantity	int(10) unsigned	(NULL)	YES		(NULL)		select,insert,update,ref
resourceUsed	int(10) unsigned	(NULL)	YES		(NULL)		select,insert,update,ref
resourceArchive	tinyint(1)	(NULL)	YES		(NULL)		select,insert,update,ref

Indexes

Table	Non unique	Key name	Seq in index	Column name	Collation	Cardinality	Sub part	Packed	Null	Index type	Comm
ResourceTBL	0	PRIMARY	1	ResourceID	A	2	(NULL)	(NULL)		BTREE	

RosterRoleTBL

Fields

Field	Type	Collation	Null	Key	Default	Extra	Privileges	Comment
RosterRoleID	int(10) unsigned	(NULL)	NO				select,insert,update,references	
RosterRole	varchar(50)	latin1_swedish_ci	NO				select,insert,update,references	

Indexes

ShiftTBL

Fields

Field	Type	Collation	Null	Key	Default	Extra	Privileges
ShiftID	int(10) unsigned	(NULL)	NO	PRI	(NULL)	auto_increment	select,insert,update,refe
shiftPeopleRequired	int(10) unsigned	(NULL)	YES		(NULL)		select,insert,update,refe
shiftDescription	blob	(NULL)	YES		(NULL)		select,insert,update,refe
shiftNotes	blob	(NULL)	YES		(NULL)		select,insert,update,refe
shiftBreifingTime	int(10) unsigned	(NULL)	YES		(NULL)		select,insert,update,refe
shiftBreifingDate	varchar(20)	latin1_swedish_ci	YES		(NULL)		select,insert,update,refe
shiftStart	int(10) unsigned	(NULL)	YES		(NULL)		select,insert,update,refe
shiftEnd	int(10) unsigned	(NULL)	YES		(NULL)		select,insert,update,refe
shiftDate	varchar(20)	latin1_swedish_ci	YES		(NULL)		select,insert,update,refe

Indexes

Table	Non unique	Key name	Seq in index	Column name	Collation	Cardinality	Sub part	Packed	Null	Index type	Comment
ShiftTBL	0	PRIMARY	1	ShiftID	A	11	(NULL)	(NULL)		BTREE	

SiteTBL

Fields

Field	Type	Collation	Null	Key	Default	Extra	Privileges
SiteID	int(10) unsigned	(NULL)	NO	PRI	(NULL)	auto_increment	select,insert,update,ref
EventID	int(10) unsigned	(NULL)	NO				select,insert,update,ref
attachedFiles	blob	(NULL)	YES		(NULL)		select,insert,update,ref
siteReport	blob	(NULL)	YES		(NULL)		select,insert,update,ref
siteType	int(10) unsigned	(NULL)	YES		(NULL)		select,insert,update,ref
siteAddress	varchar(255)	latin1_swedish_ci	YES		(NULL)		select,insert,update,ref
siteSuburb	varchar(45)	latin1_swedish_ci	YES		(NULL)		select,insert,update,ref
siteState	varchar(45)	latin1_swedish_ci	YES		(NULL)		select,insert,update,ref
sitePostCode	int(10) unsigned	(NULL)	YES		(NULL)		select,insert,update,ref
siteArchive	tinyint(1)	(NULL)	YES		(NULL)		select,insert,update,ref
siteNotes	blob	(NULL)	YES		(NULL)		select,insert,update,ref
siteContactName	varchar(255)	latin1_swedish_ci	YES		(NULL)		select,insert,update,ref
siteContactNumber	varchar(20)	latin1_swedish_ci	YES		(NULL)		select,insert,update,ref
siteContactEmail	varchar(255)	latin1_swedish_ci	YES		(NULL)		select,insert,update,ref
siteContactAddress	varchar(255)	latin1_swedish_ci	YES		(NULL)		select,insert,update,ref
siteContactAddress2	varchar(100)	latin1_swedish_ci	YES		(NULL)		select,insert,update,ref

Indexes

Table	Non unique	Key name	Seq in index	Column name	Collation	Cardinality	Sub part	Packed	Null	Index type	Comment
SiteTBL	0	PRIMARY	1	SiteID	A	0	(NULL)	(NULL)		BTREE	

SiteTBL\_has\_TeamTBL

Fields

Field	Type	Collation	Null	Key	Default	Extra	Privileges	Comment
TeamRosterID	int(10) unsigned	(NULL)	NO				select,insert,update,references	
SiteID	int(10) unsigned	(NULL)	NO				select,insert,update,references	
TeamSiteID	int(10) unsigned	(NULL)	NO	PRI	(NULL)	auto_increment	select,insert,update,references	
ClientID	int(10) unsigned	(NULL)	YES		(NULL)		select,insert,update,references	

Indexes

Table	Non unique	Key name	Seq in index	Column name	Collation	Cardinality	Sub part	Packed	Null	Ind type
SiteTBL_has_TeamTBL	0	PRIMARY	1	TeamSiteID	A	1	(NULL)	(NULL)		BT

SkillsTBL

Fields

Field	Type	Collation	Null	Key	Default	Extra	Privileges	Comment
Catering	tinyint(1)	(NULL)	YES		0		select,insert,update,references	
firstAid	tinyint(1)	(NULL)	YES		0		select,insert,update,references	
fireFighting	tinyint(1)	(NULL)	YES		0		select,insert,update,references	
registry	tinyint(1)	(NULL)	YES		0		select,insert,update,references	
personalSupport	tinyint(1)	(NULL)	YES		0		select,insert,update,references	
emergancyAssist	tinyint(1)	(NULL)	YES		0		select,insert,update,references	
stateInquiryCentre	tinyint(1)	(NULL)	YES		0		select,insert,update,references	
REDiSupport	tinyint(1)	(NULL)	YES		0		select,insert,update,references	
otherSkill	blob	(NULL)	YES		(NULL)		select,insert,update,references	
SkillsID	int(10)	(NULL)	NO				select,insert,update,references	

Indexes

StaffPWordTBL

Fields

Field	Type	Collation	Null	Key	Default	Extra	Privileges	Comment
StaffPWordID	int(10) unsigned	(NULL)	NO	PRI	(NULL)	auto_increment	select,insert,update,references	
staffPWord	blob	(NULL)	YES		(NULL)		select,insert,update,references	

Indexes

Table	Non unique	Key name	Seq in index	Column name	Collation	Cardinality	Sub part	Packed	Null	Index type
StaffPWordTBL	0	PRIMARY	1	StaffPWordID	A	1	(NULL)	(NULL)		BTREE

StaffStatusTBL

Fields

Field	Type	Collation	Null	Key	Default	Extra	Privileges
StaffStatusID	int(10) unsigned	(NULL)	NO	PRI	(NULL)	auto_increment	select,insert,update,references
statusName	varchar(45)	latin1_swedish_ci	YES		(NULL)		select,insert,update,references

Indexes

Table	Non unique	Key name	Seq in index	Column name	Collation	Cardinality	Sub part	Packed	Null	Index type	Co
StaffStatusTBL	0	PRIMARY	1	StaffStatusID	A	0	(NULL)	(NULL)		BTREE	

## StaffTBL

## Fields

Field	Type	Collation	Null	Key	Default	Extra	
StaffID	int(10) unsigned	(NULL)	NO	PRI	(NULL)	auto_increment	select,insert
TitleID	int(10) unsigned	(NULL)	NO				select,insert
GenderID	int(10) unsigned	(NULL)	NO				select,insert
StaffPWordID	int(10) unsigned	(NULL)	NO				select,insert
AccessID	int(10) unsigned	(NULL)	NO				select,insert
StaffStatusID	int(10) unsigned	(NULL)	NO				select,insert
staffFName	varchar(45)	latin1_swedish_ci	YES		(NULL)		select,insert
staffLName	varchar(45)	latin1_swedish_ci	YES		(NULL)		select,insert
staffAddress	varchar(255)	latin1_swedish_ci	YES		(NULL)		select,insert
staffSuburb	varchar(45)	latin1_swedish_ci	YES		(NULL)		select,insert
staffState	varchar(45)	latin1_swedish_ci	YES		(NULL)		select,insert
staffPostCode	int(10) unsigned	(NULL)	YES		(NULL)		select,insert
staffSecurity	tinyint(1)	(NULL)	YES		(NULL)		select,insert
staffEmail	varchar(255)	latin1_swedish_ci	YES		(NULL)		select,insert
staffArchive	tinyint(1)	(NULL)	YES		(NULL)		select,insert
staffLicence	int(10) unsigned	(NULL)	YES		(NULL)		select,insert
staffPassport	varchar(45)	latin1_swedish_ci	YES		(NULL)		select,insert
staffEmergencyContactName	varchar(255)	latin1_swedish_ci	YES		(NULL)		select,insert
staffEmergencyContactPhone	varchar(20)	latin1_swedish_ci	YES		(NULL)		select,insert
staffEmergencyContactEmail	varchar(255)	latin1_swedish_ci	YES		(NULL)		select,insert
staffMiddleNames	varchar(255)	latin1_swedish_ci	YES		(NULL)		select,insert
staffPreferredName	varchar(45)	latin1_swedish_ci	YES		(NULL)		select,insert
staffDOB	varchar(20)	latin1_swedish_ci	YES		(NULL)		select,insert
staffPhone	varchar(20)	latin1_swedish_ci	YES		(NULL)		select,insert

staffMobileNumber	varchar(20)	latin1_swedish_ci	YES	(NULL)	select,insert
staffPreferredEmail	varchar(255)	latin1_swedish_ci	YES	(NULL)	select,insert
SkillsID	int(10) unsigned	(NULL)	NO		select,insert
staffEmergencyContactAddress	varchar(255)	latin1_swedish_ci	YES	(NULL)	select,insert

Indexes

Table	Non unique	Key name	Seq in index	Column name	Collation	Cardinality	Sub part	Packed	Null	Index type	Comment
StaffTBL	0	PRIMARY	1	StaffID	A	4	(NULL)	(NULL)		BTREE	

StaffTBL\_has\_TeamTBL

Fields

Field	Type	Collation	Null	Key	Default	Extra	Privileges	Comm
TeamRosterID	int(10) unsigned	(NULL)	NO				select,insert,update,references	
StaffID	int(10) unsigned	(NULL)	NO				select,insert,update,references	
involvementDate	varchar(20)	latin1_swedish_ci	YES		(NULL)		select,insert,update,references	

Indexes

SubTypeTBL

Fields

Field	Type	Collation	Null	Key	Default	Extra	Privileges
SubTypeID	int(10) unsigned	(NULL)	NO	PRI	(NULL)	auto_increment	select,insert,update,reference
TypeID	int(10) unsigned	(NULL)	NO				select,insert,update,reference
subTypeName	varchar(255)	latin1_swedish_ci	YES		(NULL)		select,insert,update,reference

Indexes

Table	Non unique	Key name	Seq in index	Column name	Collation	Cardinality	Sub part	Packed	Null	Index type	Comm
SubTypeTBL	0	PRIMARY	1	SubTypeID	A	1	(NULL)	(NULL)		BTREE	

## TeamRosterTBL

## Fields

Field	Type	Collation	Null	Key	Default	Extra	Privileges
TeamRosterID	int(10) unsigned	(NULL)	NO	PRI	(NULL)	auto_increment	select,insert,update
ShiftID	int(10) unsigned	(NULL)	NO				select,insert,update
TeamStatusID	int(10) unsigned	(NULL)	NO				select,insert,update
teamRosterName	varchar(45)	latin1_swedish_ci	YES		(NULL)		select,insert,update
teamRosterPhone	varchar(20)	latin1_swedish_ci	YES		(NULL)		select,insert,update
teamRosterActive	int(10) unsigned	(NULL)	YES		(NULL)		select,insert,update
teamRosterLocation	blob	(NULL)	YES		(NULL)		select,insert,update
RosterRoleID	int(10) unsigned	(NULL)	YES		(NULL)		select,insert,update
teamRosterSignIn	int(10) unsigned	(NULL)	YES		(NULL)		select,insert,update
teamRosterSignInDate	varchar(20)	latin1_swedish_ci	YES		(NULL)		select,insert,update
teamRosterSignOff	int(10) unsigned	(NULL)	YES		(NULL)		select,insert,update
teamRosterSignOffDate	varchar(20)	latin1_swedish_ci	YES		(NULL)		select,insert,update
teamRosterBreifed	tinyint(1)	(NULL)	YES		(NULL)		select,insert,update
teamRosterBreifTime	int(10) unsigned	(NULL)	YES		(NULL)		select,insert,update
teamRosterBreifDate	varchar(20)	latin1_swedish_ci	YES		(NULL)		select,insert,update
teamRosterBreifNotes	blob	(NULL)	YES		(NULL)		select,insert,update
teamRosterAddress	varchar(255)	latin1_swedish_ci	YES		(NULL)		select,insert,update
teamRosterSuburb	varchar(45)	latin1_swedish_ci	YES		(NULL)		select,insert,update
teamRosterState	varchar(45)	latin1_swedish_ci	YES		(NULL)		select,insert,update
teamRosterPostCode	int(10) unsigned	(NULL)	YES		(NULL)		select,insert,update
teamRosterArchive	tinyint(1)	(NULL)	YES		(NULL)		select,insert,update
teamRosterStart	int(10) unsigned	(NULL)	YES		(NULL)		select,insert,update

teamRosterFinish	int(10) unsigned	(NULL)	YES	(NULL)		select,insert,up
teamRosterDebreif	tinyint(1)	(NULL)	YES	(NULL)		select,insert,up
teamRosterDebreifiedTime	int(10) unsigned	(NULL)	YES	(NULL)		select,insert,up
teamRosterDebreifiedDate	varchar(20)	latin1_swedish_ci	YES	(NULL)		select,insert,up
teamRosterDebreifNotes	blob	(NULL)	YES	(NULL)		select,insert,up
teamRosterTeamQuantity	int(10) unsigned	(NULL)	YES	(NULL)		select,insert,up
teamRosterEmail	varchar(255)	latin1_swedish_ci	YES	(NULL)		select,insert,up
teamRosterNotes	blob	(NULL)	YES	(NULL)		select,insert,up
teamRosterEscapeRoute	blob	(NULL)	YES	(NULL)		select,insert,up
teamRosterMarshallGround	blob	(NULL)	YES	(NULL)		select,insert,up

Indexes

Table	Non unique	Key name	Seq in index	Column name	Collation	Cardinality	Sub part	Packed	Null	Index type
TeamRosterTBL	0	PRIMARY	1	TeamRosterID	A	10	(NULL)	(NULL)		BTREE

TeamStatusTBL

Fields

Field	Type	Collation	Null	Key	Default	Extra	Privileges
TeamStatusID	int(10) unsigned	(NULL)	NO	PRI	(NULL)	auto_increment	select,insert,update,reference
teamStatusName	varchar(45)	latin1_swedish_ci	YES		(NULL)		select,insert,update,reference

Indexes

Table	Non unique	Key name	Seq in index	Column name	Collation	Cardinality	Sub part	Packed	Null	Index type	C
TeamStatusTBL	0	PRIMARY	1	TeamStatusID	A	0	(NULL)	(NULL)		BTREE	

TeamTBL\_has\_ResourceTBL

Fields

Field	Type	Collation	Null	Key	Default	Extra	Privileges	Comments
TeamRosterID	int(10) unsigned	(NULL)	NO				select,insert,update,references	
ResourceID	int(10) unsigned	(NULL)	NO				select,insert,update,references	
checkOutTime	int(10) unsigned	(NULL)	YES		(NULL)		select,insert,update,references	
checkOutDate	varchar(20)	latin1_swedish_ci	YES		(NULL)		select,insert,update,references	

Indexes

TeamTBL\_has\_VolunteerTBL

Fields

Field	Type	Collation	Null	Key	Default	Extra	Privileges	Comm
TeamRosterID	int(10) unsigned	(NULL)	NO				select,insert,update,references	
VolunteerID	int(10) unsigned	(NULL)	NO				select,insert,update,references	
involvementDate	varchar(20)	latin1_swedish_ci	YES		(NULL)		select,insert,update,references	

Indexes

TimeAvailableTBL

Fields

Field	Type	Collation	Null	Key	Default	Extra	Privileges	Comments
TimeAvailableID	int(10) unsigned	(NULL)	NO	PRI	(NULL)	auto_increment	select,insert,update,references	
businessHours	tinyint(1)	(NULL)	YES		(NULL)		select,insert,update,references	
allDay	tinyint(1)	(NULL)	YES		(NULL)		select,insert,update,references	
overNight	tinyint(1)	(NULL)	YES		(NULL)		select,insert,update,references	
none	tinyint(1)	(NULL)	YES		(NULL)		select,insert,update,references	

Indexes

Table	Non unique	Key name	Seq in index	Column name	Collation	Cardinality	Sub part	Packed	Null	Index type
TimeAvailableTBL	0	PRIMARY	1	TimeAvailableID	A	0	(NULL)	(NULL)		BT

TitleTBL

Fields

Field	Type	Collation	Null	Key	Default	Extra	Privileges	Comments
TitleID	int(10) unsigned	(NULL)	NO	PRI	(NULL)	auto_increment	select,insert,update,references	
title	varchar(20)	latin1_swedish_ci	YES		(NULL)		select,insert,update,references	

Indexes

Table	Non unique	Key name	Seq in index	Column name	Collation	Cardinality	Sub part	Packed	Null	Index type	Comment
TitleTBL	0	PRIMARY	1	TitleID	A	9	(NULL)	(NULL)		BTREE	

TypeTBL

Fields

Field	Type	Collation	Null	Key	Default	Extra	Privileges	C
TypeID	int(10) unsigned	(NULL)	NO	PRI	(NULL)	auto_increment	select,insert,update,references	
TypeName	varchar(255)	latin1_swedish_ci	YES		(NULL)		select,insert,update,references	

Indexes

Table	Non unique	Key name	Seq in index	Column name	Collation	Cardinality	Sub part	Packed	Null	Index type	Comment
TypeTBL	0	PRIMARY	1	TypeID	A	1	(NULL)	(NULL)		BTREE	

TypeTBL\_has\_EventTBL

Fields

Field	Type	Collation	Null	Key	Default	Extra	Privileges	Comment
EventID	int(10) unsigned	(NULL)	NO				select,insert,update,references	
TypeID	int(10) unsigned	(NULL)	NO				select,insert,update,references	

Indexes

TypeTBL\_has\_SiteTBL

## Fields

Field	Type	Collation	Null	Key	Default	Extra	Privileges	Comment
TypeID	int(10) unsigned	(NULL)	NO				select,insert,update,references	
SiteID	int(10) unsigned	(NULL)	NO				select,insert,update,references	

## Indexes

VolunteerPWordTBL

Fields

Field	Type	Collation	Null	Key	Default	Extra	Privileges	Comr
VolunteerPWordID	int(10) unsigned	(NULL)	NO	PRI	(NULL)	auto_increment	select,insert,update,references	
volunteerPword	blob	(NULL)	YES		(NULL)		select,insert,update,references	

Indexes

Table	Non unique	Key name	Seq in index	Column name	Collation	Cardinality	Sub part	Packed	Null
VolunteerPWordTBL	0	PRIMARY	1	VolunteerPWordID	A	5	(NULL)	(NULL)	

VolunteerStatusTBL

Fields

Field	Type	Collation	Null	Key	Default	Extra	Privileges	Cor
VolunteerStatusID	int(11)	(NULL)	NO	PRI			select,insert,update,references	
statusName	varchar(255)	latin1_swedish_ci	YES		(NULL)		select,insert,update,references	

Indexes

Table	Non unique	Key name	Seq in index	Column name	Collation	Cardinality	Sub part	Packed	Null	t
VolunteerStatusTBL	0	PRIMARY	1	VolunteerStatusID	A	3	(NULL)	(NULL)		F

VolunteerTBL

Fields

Field	Type	Collation	Null	Key	Default	Extra	Privile
VolunteerID	int(10) unsigned	(NULL)	NO	PRI			select,insert,upd
AvailablityID	int(10) unsigned	(NULL)	NO				select,insert,upd
TitleID	int(10) unsigned	(NULL)	NO		0		select,insert,upd
GenderID	int(10) unsigned	(NULL)	NO		0		select,insert,upd
SkillsID	int(10) unsigned	(NULL)	NO		0		select,insert,upd
AccessID	int(10) unsigned	(NULL)	NO		0		select,insert,upd
VolunteerPWordID	int(10) unsigned	(NULL)	NO		0		select,insert,upd
StatusID	int(10) unsigned	(NULL)	NO		0		select,insert,upd
volunteerFName	varchar(45)	latin1_swedish_ci	YES		(NULL)		select,insert,upd
volunteerLName	varchar(45)	latin1_swedish_ci	YES		(NULL)		select,insert,upd
volunteerUniform	tinyint(1)	(NULL)	YES		0		select,insert,upd
volunteerLicence	int(11)	(NULL)	YES		0		select,insert,upd
volunteerSecurity	tinyint(1)	(NULL)	YES		0		select,insert,upd
volunteerEmail	varchar(255)	latin1_swedish_ci	YES		(NULL)		select,insert,upd
volunteerAddress	varchar(255)	latin1_swedish_ci	YES		(NULL)		select,insert,upd
volunteerSuburb	varchar(45)	latin1_swedish_ci	YES		(NULL)		select,insert,upd
volunteerState	varchar(45)	latin1_swedish_ci	YES		(NULL)		select,insert,upd
volunteerPostCode	int(10) unsigned	(NULL)	YES		(NULL)		select,insert,upd
volunteerArchive	tinyint(1)	(NULL)	YES		0		select,insert,upd
volunteerPassport	varchar(45)	latin1_swedish_ci	YES		0		select,insert,upd
volunteerEmergencyContactName	varchar(45)	latin1_swedish_ci	YES		(NULL)		select,insert,upd
volunteerEmergencyContactNumber	varchar(20)	latin1_swedish_ci	YES		(NULL)		select,insert,upd
volunteerEmergencyContactAddress	varchar(255)	latin1_swedish_ci	YES		(NULL)		select,insert,upd
volunteerMiddleNames	varchar(255)	latin1_swedish_ci	YES		(NULL)		select,insert,upd
volunteerPerferredName	varchar(255)	latin1_swedish_ci	YES		(NULL)		select,insert,upd

volunteerDOB	varchar(20)	latin1_swedish_ci	YES		(NULL)		select,insert,upd
volunteerPhone	varchar(20)	latin1_swedish_ci	YES		(NULL)		select,insert,upd
volunteerMobile	varchar(20)	latin1_swedish_ci	YES		(NULL)		select,insert,upd
volunteerPrefferedEmail	varchar(255)	latin1_swedish_ci	YES		(NULL)		select,insert,upd
volunteerIDBadge	tinyint(1)	(NULL)	YES		(NULL)		select,insert,upd
volunteerEmergencyContactEmail	varchar(255)	latin1_swedish_ci	YES		(NULL)		select,insert,upd

Indexes

Table	Non unique	Key name	Seq in index	Column name	Collation	Cardinality	Sub part	Packed	Null	Index type	Com
VolunteerTBL	0	PRIMARY	1	VolunteerID	A	16	(NULL)	(NULL)		BTREE	